

VorticCatch V

Single-use Retrieval Nitinol Basket



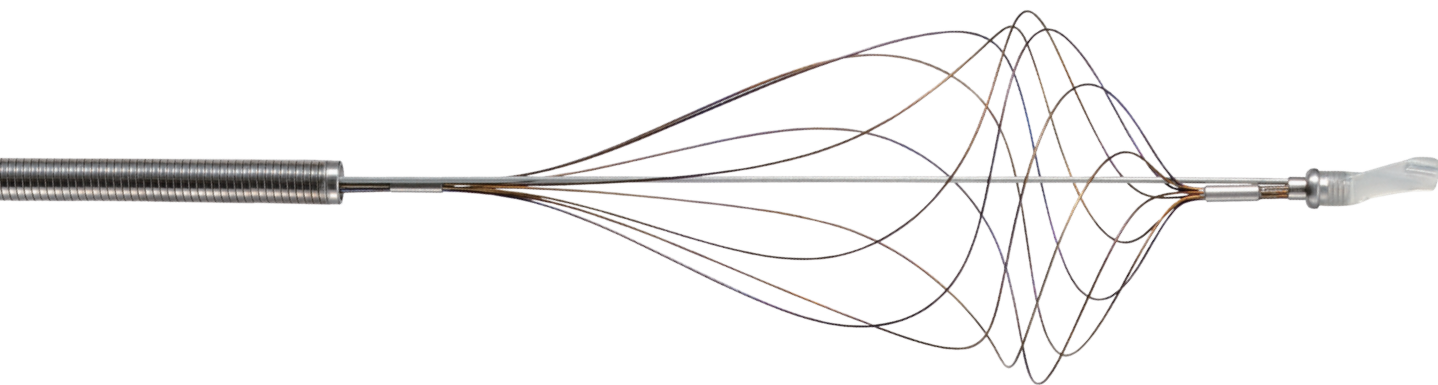
New Concept – Vortex

A New Design that Expands the Scope of Stone Retrieval

Vortex Means a Whirlpool, Spiral or Tornado.

The VorticCatch V adopts an Olympus wire design that is reminiscent of a vortex.

With a vortex design that is different from the traditional tetra- and flower-type baskets, VorticCatch V supports retrieval procedures even in difficult cases.



Unique 8-wire Spiral Design

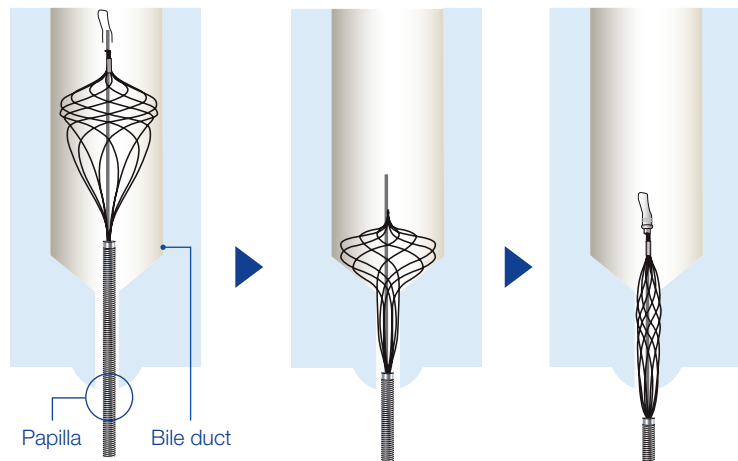
The wires cover the whole circumference of the bile duct. The clearances between wires are fine on the distal end and coarse on the proximal end to achieve both ease of stone retrieval and of stone removal at the highest level.

Flexible Coil Sheath and Nitinol Basket with Little Shape Loss

The sheath has a coil design to ensure the papilla approach performance and the basket is made of nitinol that features the shape memory with little loss of shape and excellent durability.

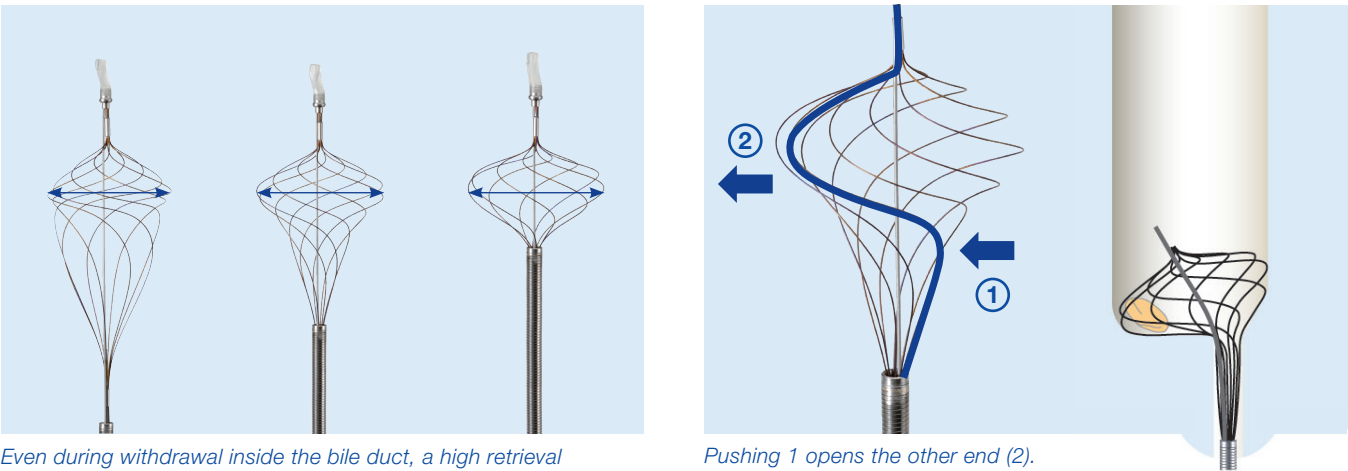
Basic Operation Method of VorticCatch V

Withdrawing the sheath while the basket is open supports easy stone retrieval.



Unique Approach of VorticCatch V

Pushing the bottom end of the basket opens the top end of the other side of the basket. This design supports the approach to the pockets at the bottom end of the bile duct that is hard to approach with traditional basket types.

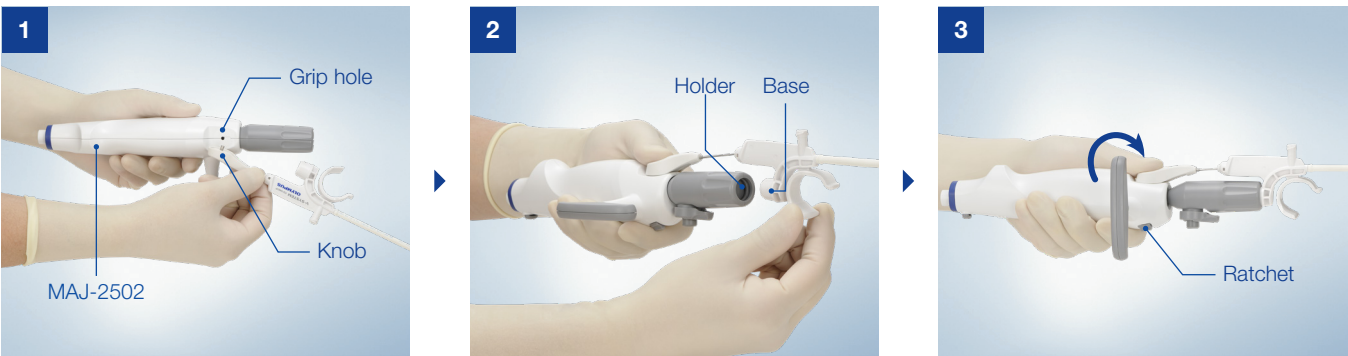


Even during withdrawal inside the bile duct, a high retrieval performance is assured by the special design that maintains the opening width at the top end.

Pushing 1 opens the other end (2).

Avoidance of basket impaction

The coil sheath makes avoidance of endoscopic impaction before using the emergency lithotripter BML-610A possible.



Insert joint pin into the grip hole on the back of the MAJ-2502.

Insert the base into the holder of the MAJ-2502.

Holding the grip firmly, set the ratchet ON (position 2) and rotate the knob.

New Concept – Vortex

A New Design that Expands the Scope of Stone Retrieval

Specifications

Single Use Retrieval Nitinol Basket V VorticCatch V

Model	Maximum Insertion Portion in Diameter	Basket Type	Rotatable/Wireguide Type	Opening Width	Working Length	Compatible Guidewire	Minimum Channel Size
FG-V451P	2.9 mm	8-wire spiral type	Distal wireguide type	20 mm	1900 mm	0.89 mm (0.035 inch) or smaller	3.7 mm

Single Use Retrieval Basket V

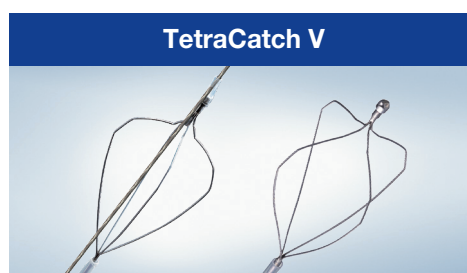
Model	Maximum Insertion Portion in Diameter	Basket Type	Rotatable/Wireguide Type	Opening Width	Working Length	Compatible Guidewire	Minimum Channel Size
FG-V422PR	2.4 mm	4-wire type	Rotatable type	22 mm	1900 mm	–	2.8 mm
FG-V432P	2.9 mm		Distal wireguide type			0.89 mm (0.035 inch) or smaller	3.7 mm
FG-V421PR	2.4 mm	8-wire type	Rotatable type	20 mm		–	2.8 mm
FG-V431P	2.9 mm		Distal wireguide type			0.89 mm (0.035 inch) or smaller	3.7 mm

Together with the two basket shapes and two operation methods, the VorticCatch V provides comprehensive support for stone retrieval in various situations.



Distal wire-guided type

Rotatable type

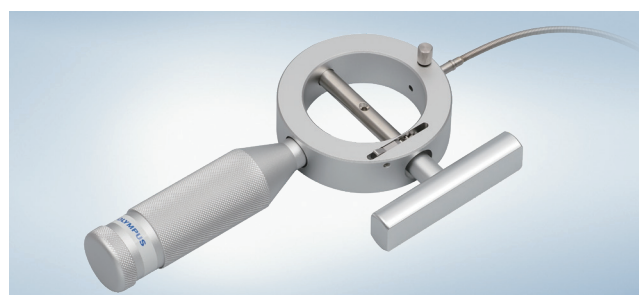


Distal wire-guided type

Rotatable type



*Single Use BML Handle V MAJ-2502
Handle with rotate function for use with an Olympus V-System lithotripter.*



*Single Use Mechanical Lithotripter BML-610A
To be used in case the instrument with stone is unable to be withdrawn from the bile duct or the stone cannot be removed from the grasping portion during use of an Olympus retrieval basket.*

Olympus EndoTherapy

Dedicated Support beyond Products

At Olympus, we strive to be more than just a medical-equipment provider to our customers. We provide end-to-end support, from the purchasing process to procedure and reprocessing services, to build a relationship of trust.



ERCP Showroom Page

Enter the world of ERCP on our Olympus website for a full overview of our product portfolio, valuable video content, information on training and much more.

> www.olympus.eu/ercp-procedure



Training

Register here to improve procedure skills and the safe and effective use of Olympus products.

> www.olympus.eu/training



Portfolio

Browse through the rich portfolio of EndoTherapy devices here.

> www.olympus.eu/et-catalog



Service

Contact your Olympus sales representative for individual support now.

As medical knowledge is constantly growing, technical modifications or changes of the product design, product specifications, accessories and service offerings may be required.