

# OLYMPUS®

Your Vision, Our Future

## EVIS LUCERA ELITE

EVIS LUCERA ELITE COLONOVideoscope

### PCF-H290DL/I

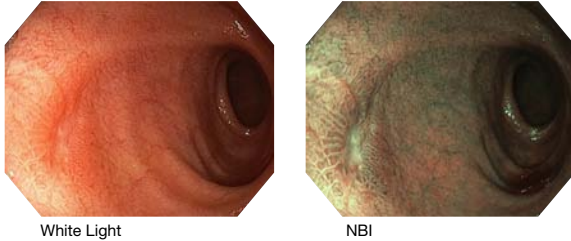
The slim colonoscope with ScopeGuide compatibility



## Main Features

### HDTV and NBI (Narrow Band Imaging)

HDTV image quality and 170° angle of view support detailed observation and facilitate lesion detection. Combination with the high performance of the EVIS LUCERA ELITE's NBI opens up exciting new clinical applications and reinforces NBI's position as the standard of care for GI endoscopy.



### RIT (Responsive Insertion Technology)

RIT combines three proprietary insertion tube technologies: HFT (High Force Transmission), PB (Passive Bending) and variable stiffness. These technologies are designed to facilitate complete colonoscopies by improving scope handling, insertability and ergonomics. PB helps EVIS LUCERA ELITE 290 Series scopes move through acute bends in the colon. HFT provides improved operator control for pushing, pulling and twisting maneuvers. Variable stiffness allows the physician to adjust the rigidity of OLYMPUS scopes as needed, by simply turning an adjustment ring on the scope control section.

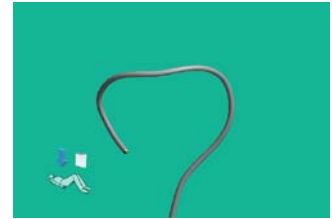
### Water Jet

Water jet function is standard on EVIS LUCERA ELITE routine colonoscopes. This technology helps to keep the mucosa clear during observation and treatment.



### Slim Colonoscope with ScopeGuide Function

While maintaining a slim outer diameter, the PCF-H290DL/I scope's added ScopeGuide technology provides real-time 3D visualization of scope position and configuration during insertion. It supports physicians with the ability to recognize loops as they form, potentially leading to shorter insertion time and less patient discomfort.



### Waterproof One-touch Connector

The connector design minimizes the effort required for setup prior to and in between cases. In addition, it is fully submersible and eliminates the need for a water-resistant cap and the associated risk of an expensive repair due to accidental immersion.



## Specifications

Optical System	Field of view	170°
	Direction of view	Forward viewing
	Depth of field	5-100 mm
Insertion Section	Distal end outer diameter	11.7 mm
	Distal end enlarged	
	Insertion tube outer diameter	11.8 mm
	Working length	L: 1680 mm I: 1330 mm
Instrument Channel	Channel inner diameter	3.2 mm

Instrument Channel	Minimum visible distance	3.0 mm from the distal end
	Direction from which endotherapy accessories enter and exit the endoscopic image	
Water Jet		
Bending Section	Angulation range	Up 180°/Down 180°/ Right 160°/Left 160°
Total Length	L: 2005 mm I: 1655 mm	
Compatible EVIS LUCERA System	Video System Center OLYMPUS CV-290 Xenon Light Source OLYMPUS CLV-290SL, CLV-290	
Position Detecting Unit	Compatible with UPD-3 (Endoscope Position Detecting Unit)	

Image Courtesy of Edgar Jaramillo, MD

Specifications, design and accessories are subject to change without any notice or obligation on the part of the manufacturer.