

OLYMPUS

Your Vision, Our Future

VISERA ELITE

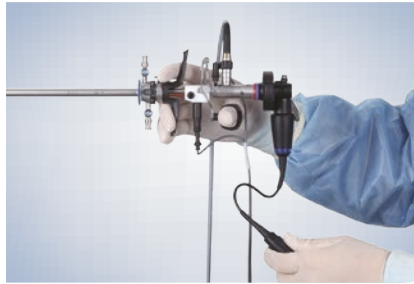
HD UROLOGY CAMERA HEAD

CH-S190-08-LB – HD ultralight camera head with Narrow Band Imaging (NBI).



Ultralight and easy to operate

- Only 65 grams – the weight of a fountain pen.
- Ergonomic design and high manoeuvrability to make even long procedures comfortable.
- Programmable remote switches at the cable for less shaking, more control and added convenience.



Specifications



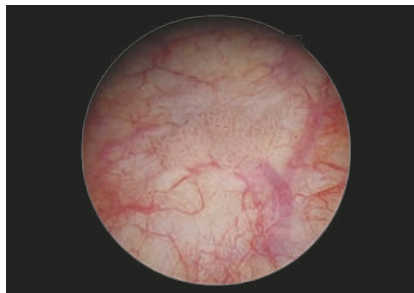
HD Urology camera head CH-S190-08-LB

Size

Camera head	ø 26 × 83 mm
Cable	ø 3.3 mm × 3.5 m
Weight	65 g (head part) 20 g (remote-control part)

Crystal clear, brilliant and true-to-life

- Details and colours are sharp and true to life.
- With VISERA ELITE II Video System Center (OTV-S200), increased brightness is provided when using NBI compared to a prior generations (CLV-S190).
- The advanced option for HD resection of BPH and bladder cancer.



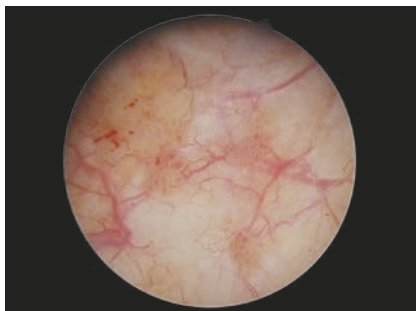
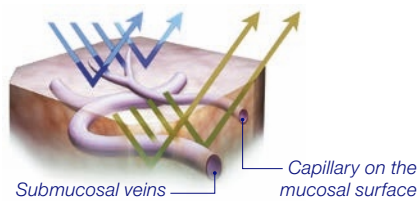
HDTV 1080 Image

VISERA ELITE Imaging Platform

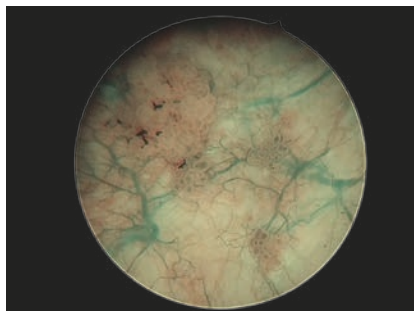


HD camera head with NBI – a unique combination for bladder cancer resection

- Combination of HD and NBI delivers 20% brighter light compared to prior camera head systems.
- Potentially higher and improved detection rate of carcinoma *in situ* due to improved visibility of vessels on the mucosal surface.



White light image



NBI image

Specifications, design, and accessories are subject to change without any notice or obligation on the part of the manufacturer.