

**BF-UC190F**

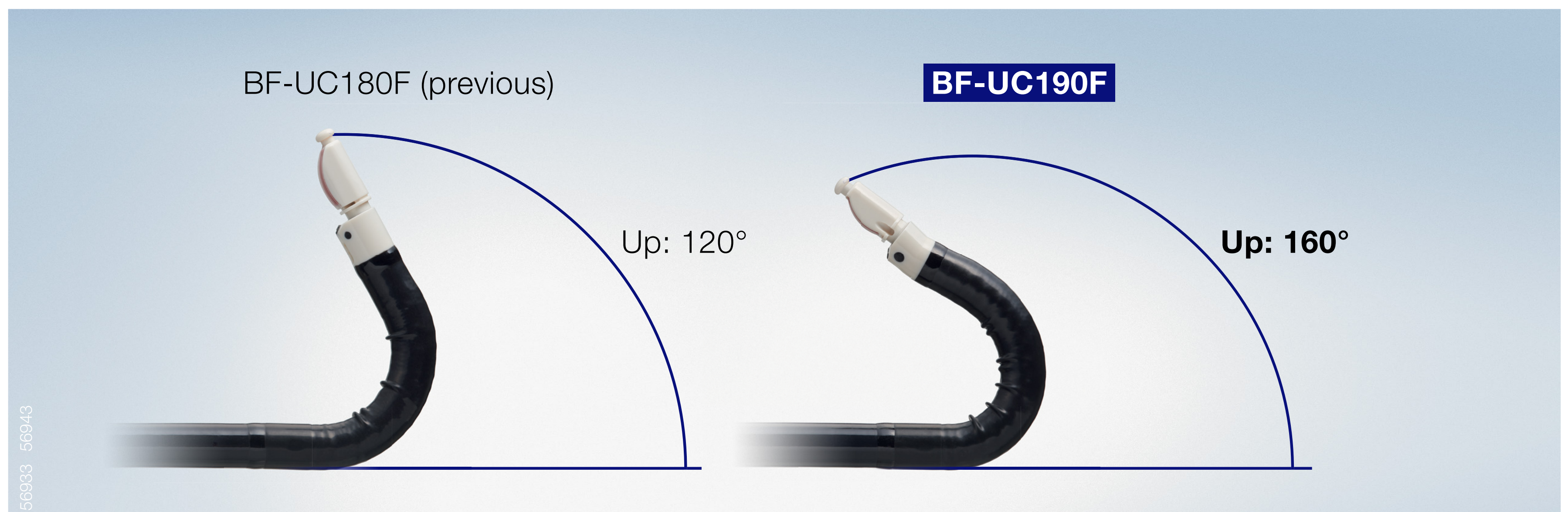
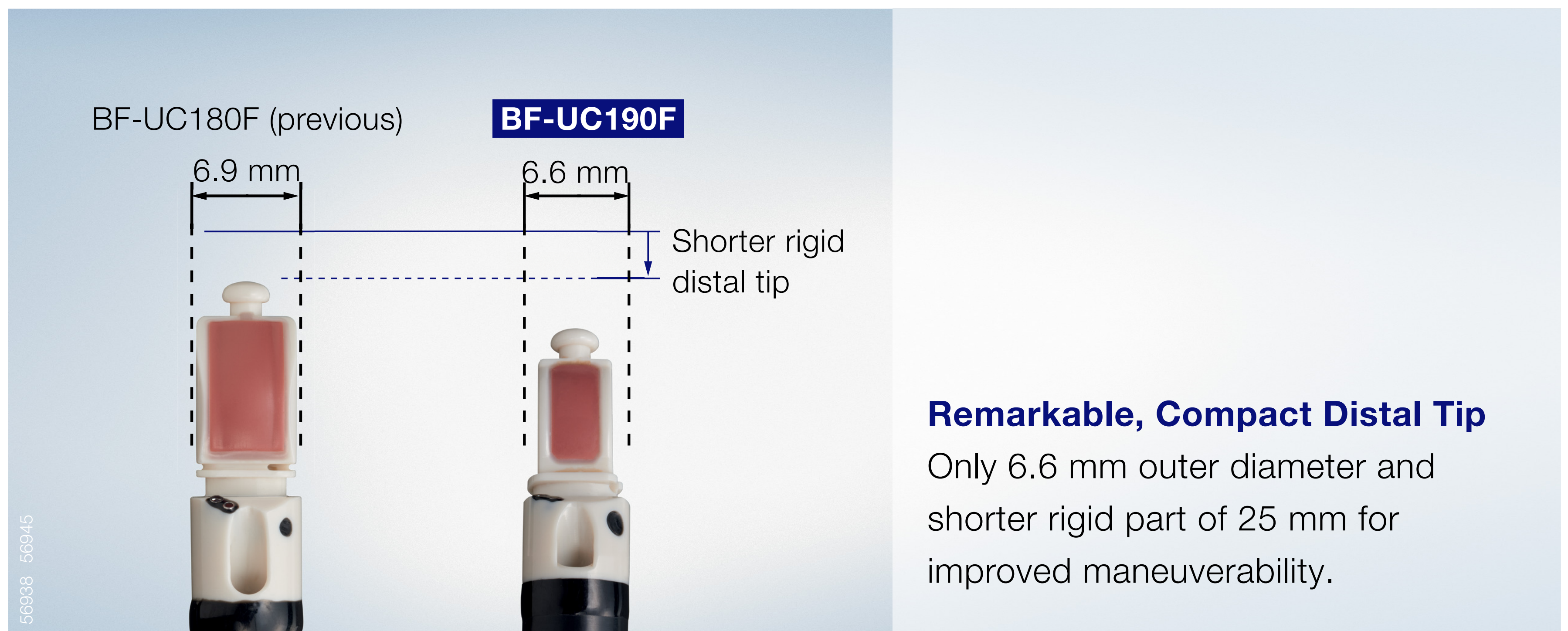
**Ultrasound Bronchofibervideoscope**





# BF-UC190F

## Enhanced Access and Maneuverability



### Powerful Angulation

Up to 160° angulation supports smoother insertion to the upper/lower lobe bronchi and allows more of a bend in the scope when an EndoTherapy device is inserted in the working channel.



**The combination of the thin distal end and wider angulation range greatly enhances maneuverability. This enables easier access to previously difficult-to-reach areas such as 4L and 10R.**

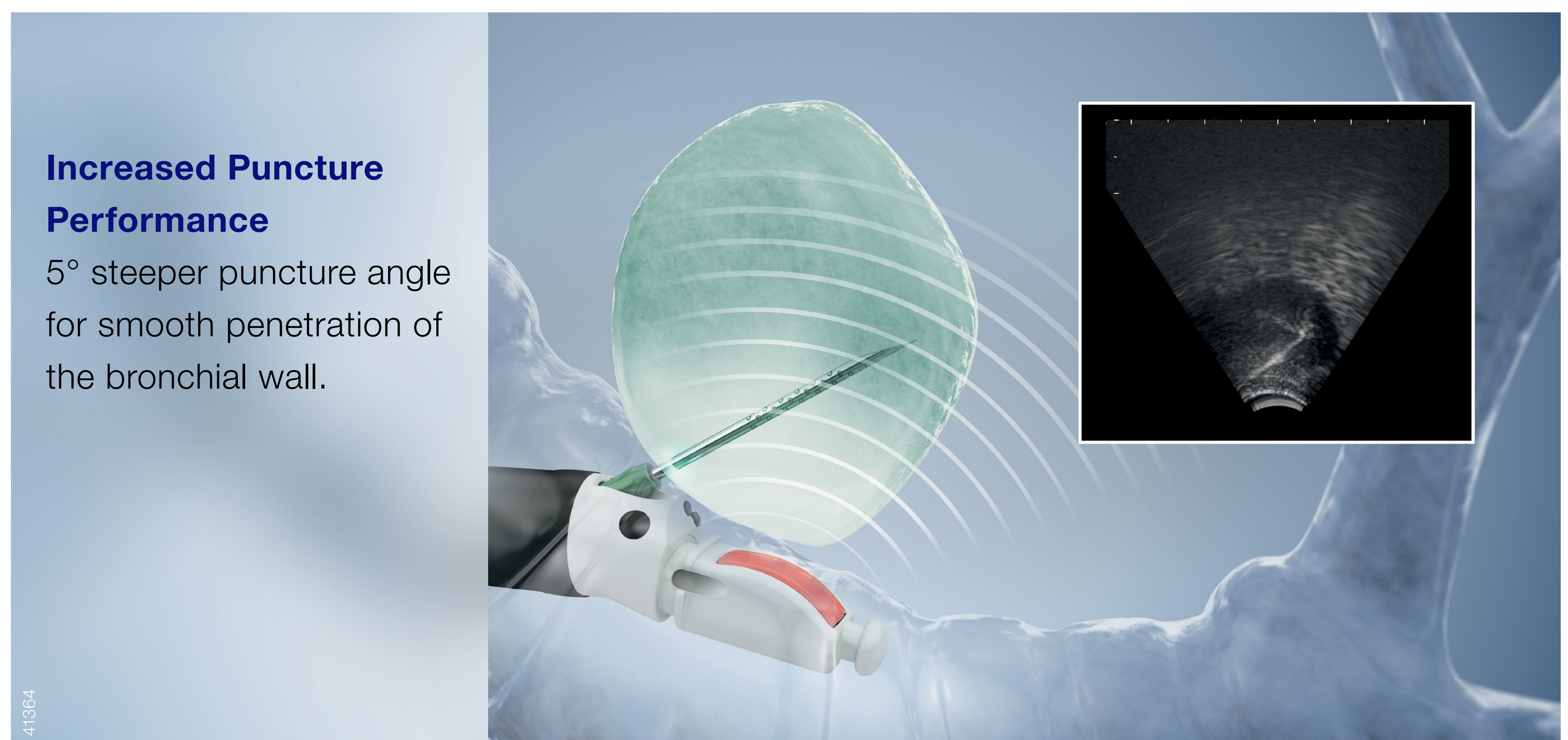
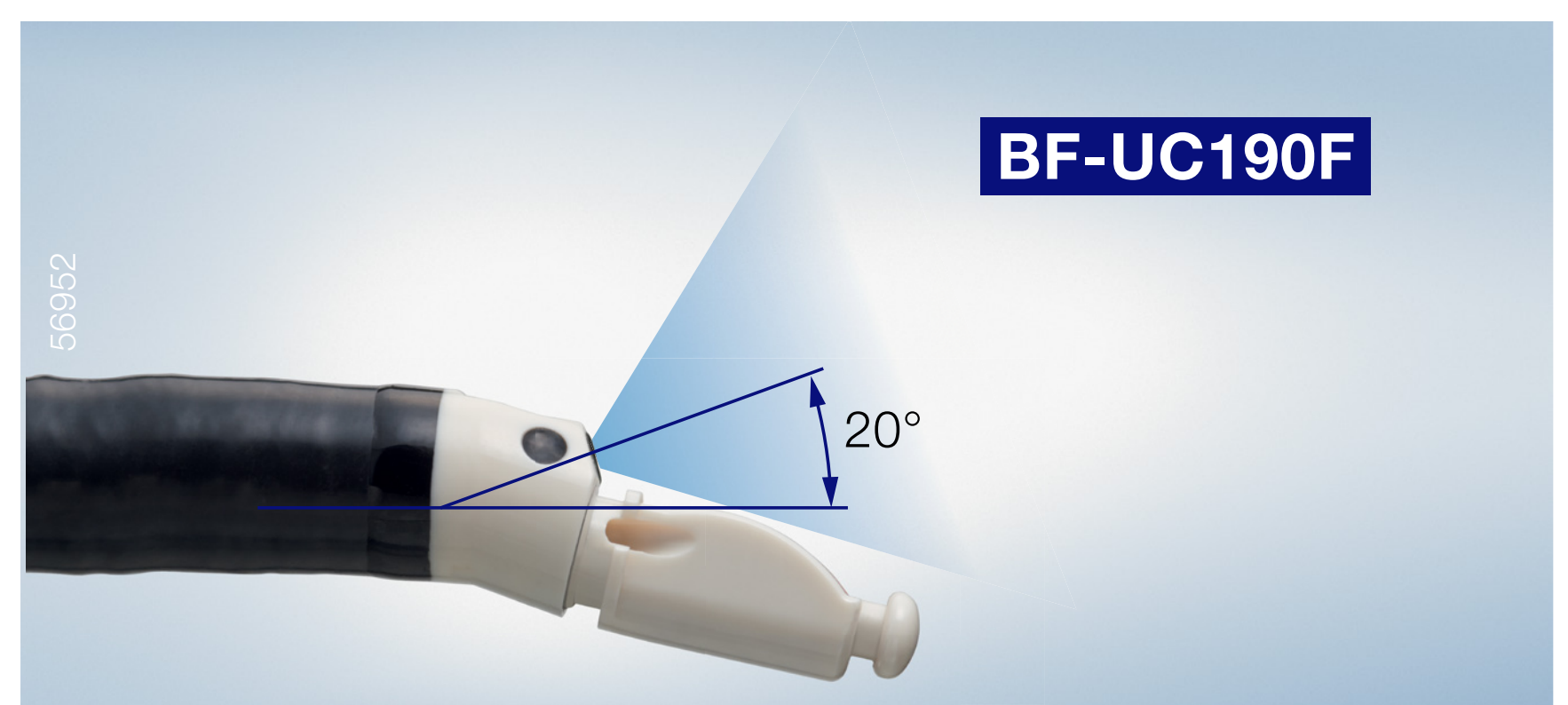
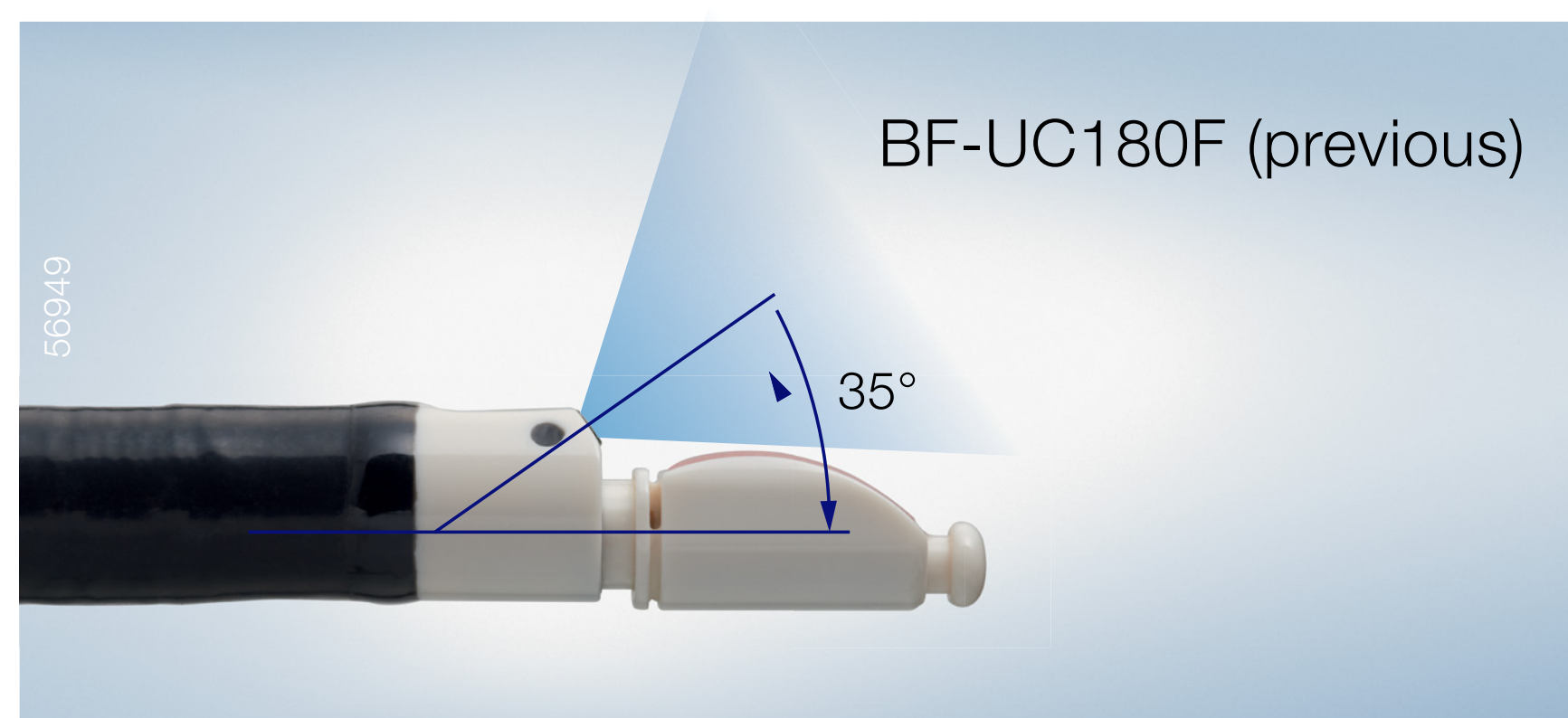


# Allowing Staging and Diagnosis

## Of Difficult to Reach Lymph Nodes and Lesions

### Easier Intubation and Orientation

The decreased forward oblique viewing angle from 35 degrees to 20 degrees allows for easier EBUS scope insertion. It also enables the operator to keep the endoscopic image in full field of view and assists the anatomic overview.



### Expand Your Possibilities in EBUS-TBNA

Olympus is unique in offering a 19G EBUS-TBNA needle in addition to the 21G, 22G and 25G needles. But now it also provides the second generation of EBUS needles — the ViziShot 2. While the entire portfolio offers the already established safety mechanisms and excellent ultrasound visibility, Olympus provides a needle for every situation — expanding your possibilities in EBUS-TBNA.



# EBUS-TBNA

## Expand your possibilities in EBUS-TBNA

### ViziShot 2 FLEX

- Largest EBUS needle with a 19G diameter with FNA (fine needle aspiration) and FNB (fine needle biopsy) indication.
- Supports histological sampling for suspected sarcoidosis and lymphoma but also helps to provide more tissue for advanced molecular analyses.
- An ally for special indications but also whenever superior flexibility is needed.

### ViziShot 2

- The new, improved 21G, 22G and 25G needles.
- Smooth needle penetration thanks to sharper needle tip.
- Better needle control with the new ergonomic handle design.

### ViziShot

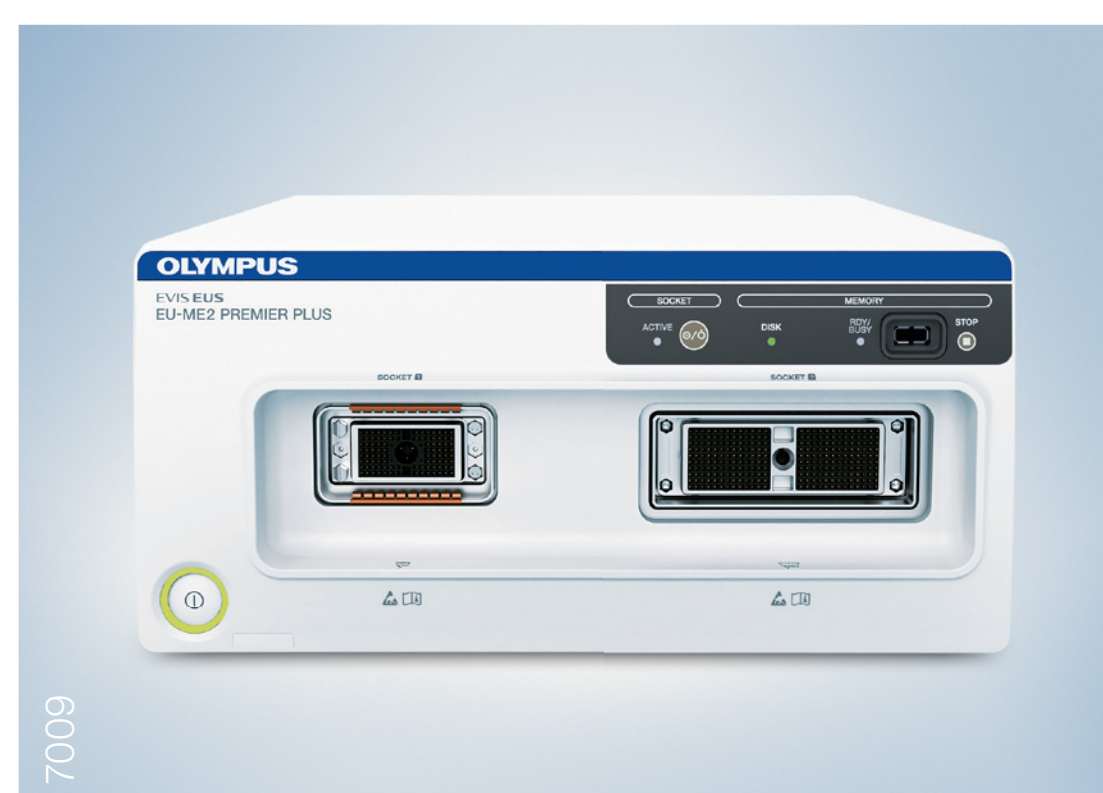
- The reliable and long-established EBUS-TBNA needle.

ViziShot 2 FLEX

ViziShot 2

ViziShot 2 25G

ViziShot



### Universal Endoscopic Ultrasound Center EU-ME2

The EU-ME2 brings real clarity to your EBUS procedures, supporting better detection and characterization of lesions. A variety of new features such as harmonic echo and elastography help to explore the future of endosonography (features depend on product model). In addition, the EU-ME2 provides compatibility with linear endoscopes and radial ultrasound miniature probes.

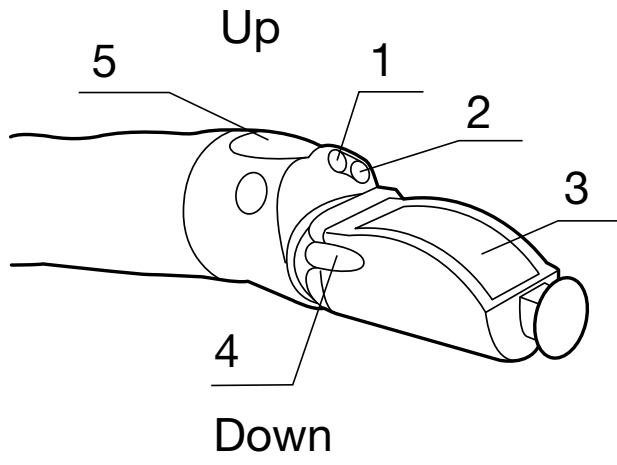
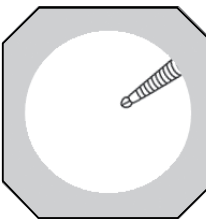

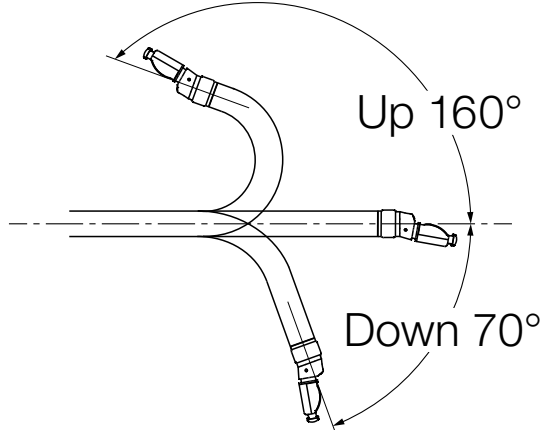


### Ultrasound Cable MAJ-2056

The cable's detachable design makes the ultrasound endoscope easy to handle, reprocess and store.



BF-UC190F

Specifications		
Endoscopic Functions		
Optical System	Field of view	80°
	Direction of view	20° forward oblique
	Depth of field	2 to 50 mm
Insertion Tube	Distal end enlarged	
	1. Objective lens	
	2. Light guide lens	
	3. Ultrasound transducer	
	4. Balloon channel outlet	
	5. Instrument channel outlet	
	Distal end outer diameter	6.6 mm
	Insertion tube outer diameter	6.3 mm
	Working length	600 mm
	Channel inner diameter	2.2 mm
Instrument Channel	Direction from which EndoTherapy accessories enter and exit the endoscopic image	
		
Bending Section		Angulation range 
Total Length		890 mm

Ultrasound Functions		
Model	With Olympus EU-ME 2 Premier Plus	With Hitachi Arietta 850
Operating Mode	B mode, H-FLOW mode, THE mode, Elastography*	B mode, M mode, eFLOW mode, THI-HdT mode, Elastography*
Scanning Method	Electronic curved linear array	Electronic curved linear array
Scanning Direction	Parallel to the insertion direction	Parallel to the insertion direction
Frequency	5, 6, 7.5, 10, 12 MHz	5, 7.5, 10, 12 MHz
Scanning Range	65°	65°
Other compatibilities	Compatible with EBUS radial miniature probes	Compatible with extracorporeal ultrasound probes
Contacting Method	Balloon method**, Direct Contact method	Balloon method**, Direct Contact method

\* Further modes available, please check instruction manual for details.  
\*\* Balloon MAJ-1351 can be used with the BF-UC190F.

As medical knowledge is constantly growing, technical modifications or changes of the product design, product specifications, accessories and service offerings may be required.