

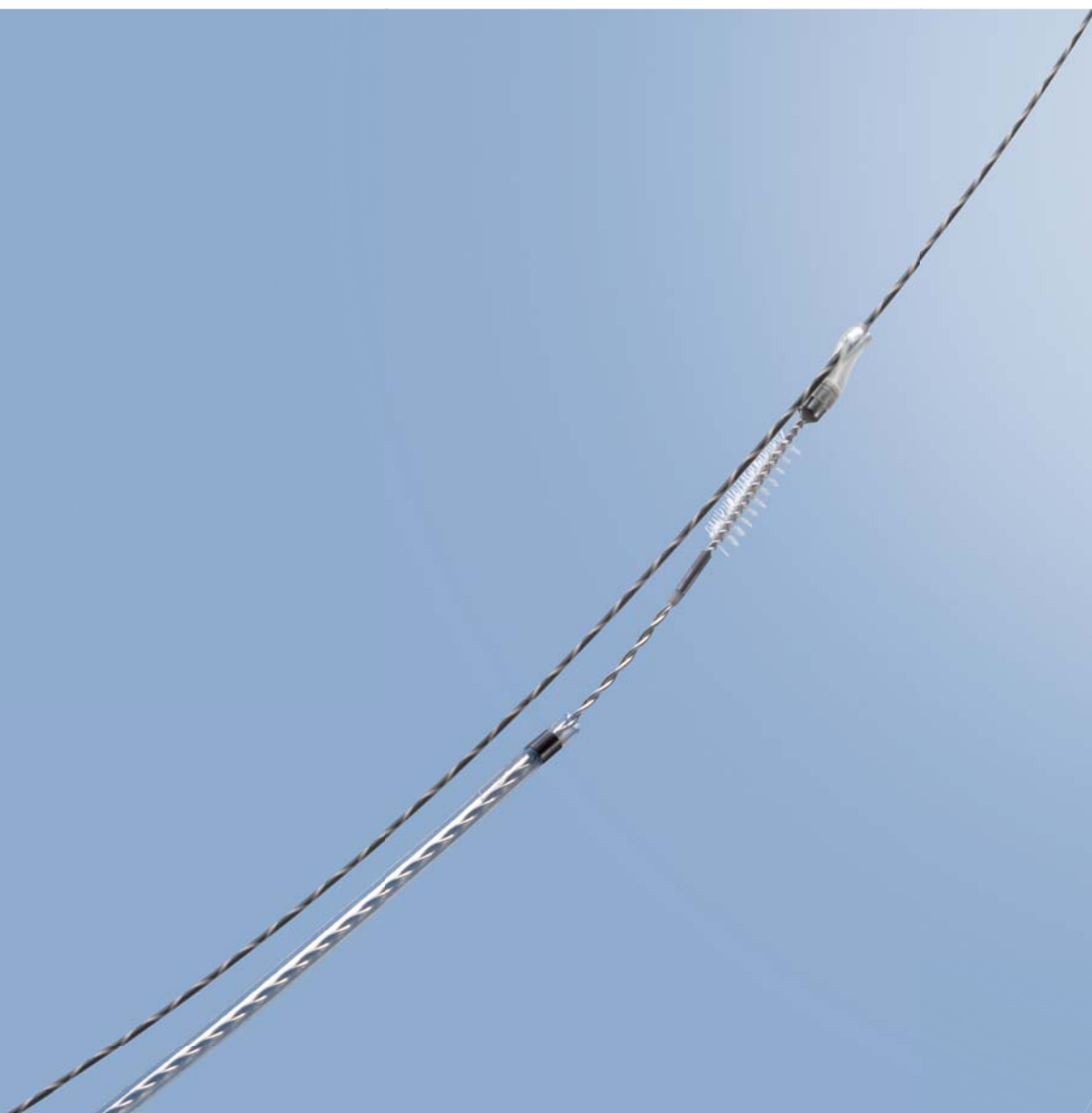
OLYMPUS[®]

Your Vision, Our Future

Endo**Therapy**[™]

Single Use Cytology Brush V

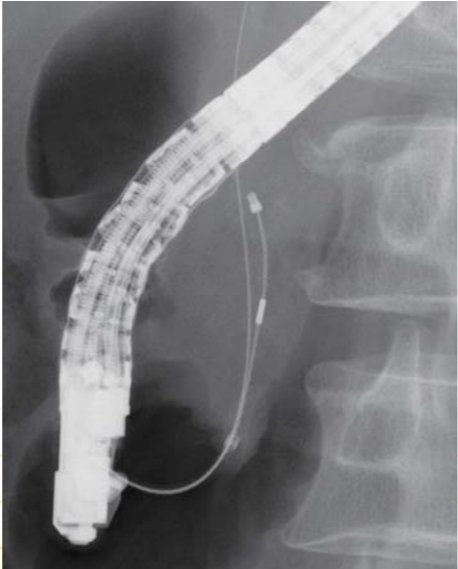
BrushMaster V[™]



Improved Fluoroscopic Visibility with Distal Wireguided Design for Excellent Stricture Passage and Precisely Targeted Brushing.

BrushMaster V™

Radiopaque markers at both ends of the brush make it easier to confirm its location under fluoroscopy, allowing the brush to reach the targeted site accurately.



Radiopaque marker

Guidewire

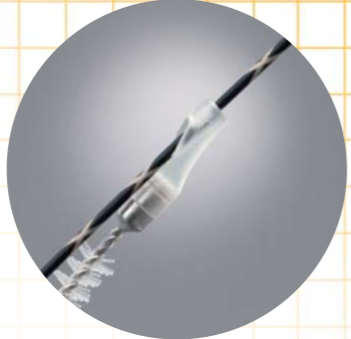
A single turn of the locking cap on the control section allows the brush to be locked. This provides the flexibility to have the physician or the assistant control the brushing.

Injection port

Locking cap

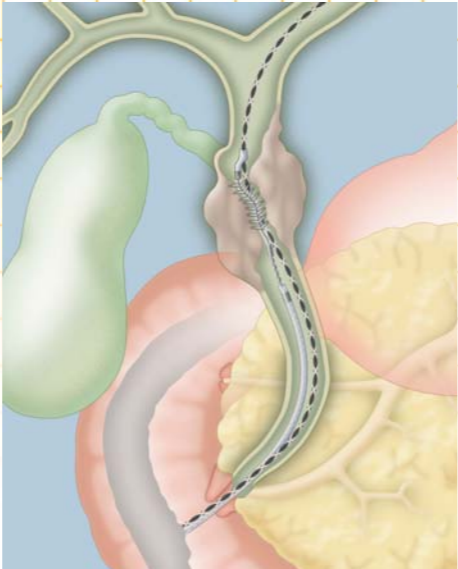
C-Hook

OLYMPUS
V-SYSTEM
BC-V600P-3010



Distal wireguided construction

Compatible with a variety of guidewires, the BrushMaster V™ is distal wireguided which allows for more accurate placement within the stricture.



The right combination of stiffness and flexibility leads to optimal pushability and helps the brush pass smoothly through the stricture.

Single Use Cytology Brush V



C-Hook



V-Marking

Specifications

Model	Brush diameter	Brush length	Working length	Sheath design	Minimum channel size
BC-V600P-3010	3 mm	10 mm	1900 mm	Distal wireguided	3.2 mm

Specifications, design and accessories are subject to change without any notice or obligation on the part of the manufacturer.

OLYMPUS[®]

OLYMPUS MEDICAL SYSTEMS CORP.
Shinjuku Monolith, 2-3-1 Nishi-Shinjuku, Shinjuku-ku, Tokyo 163-0914, Japan

For a complete listing of
sales and distribution locations visit:
www.olympus.com

Printed in Japan F0293E4-022012