

## Economic Value of Systems and Services

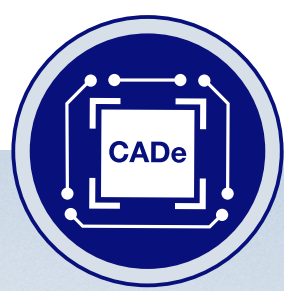
**We Lay the Foundation for Successful Patient Access and Reimbursement by  
Continuously Demonstrating the Value of Our Systems and Services**





# ENDO-AID CADe

## Real-Time Computer-Aided Detection for Endoscopy



### Benefits

<b>Improved Observational Performance in Adenoma Detection<sup>1</sup></b>	<b>Support of the Colonoscopy Screening Process</b>	<b>Smooth Integration into the Endoscopic Workflow</b>
--	---	--

- ENDO-AID CADe **improves the observational performance** of HCPs’ adenoma detection.<sup>1</sup>
- The system provides **visual support during screening**, allowing HCPs to **focus on abnormalities** indicated by the software **regardless of their experience level**.
- Due to the **simple and intuitive display of lesions**, ENDO-AID CADe has the potential to **make endoscopy easier and more efficient** for HCPs by reducing excessive eye movements.
- ENDO-AID CADe **may further reduce training time for young or inexperienced HCPs**. The assisting system increases the system’s natural ease of use, potentially shortening the learning curve for novice practitioners.

### Value Dimensions

#### ENDO-AID CADe Provides a Number of Values for You and Your Staff

<b>Economics</b> <b>Cost and Cash Flow Management</b> <ul style="list-style-type: none"><li>• May improve long-term cost effectiveness of colorectal-cancer screening programs compared to not using of AI*.</li></ul>	<b>Efficiency</b> <b>Process and Workflow Management</b> <ul style="list-style-type: none"><li>• Virtual real-time display of automatically detected suspicious lesions.</li><li>• Standardization and objectivity of HCPs.</li></ul>	<b>Reputation</b> <b>Attractiveness and Competitiveness</b> <ul style="list-style-type: none"><li>• May attract leading HCP specialists and improve facility’s reputation.<sup>2</sup></li><li>• May attract higher patient volumes, thus increasing hospital income.</li></ul>
---	--	--



\* Depending on magnitude, incidence of cancer and associated costs could potentially be reduced.

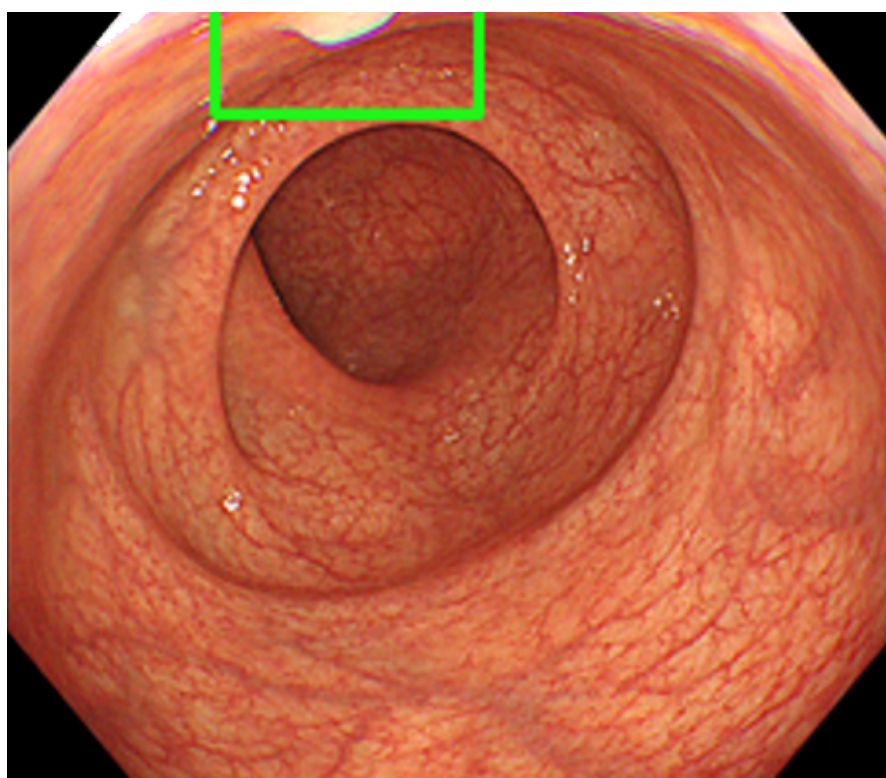


# ENDO-AID CADe

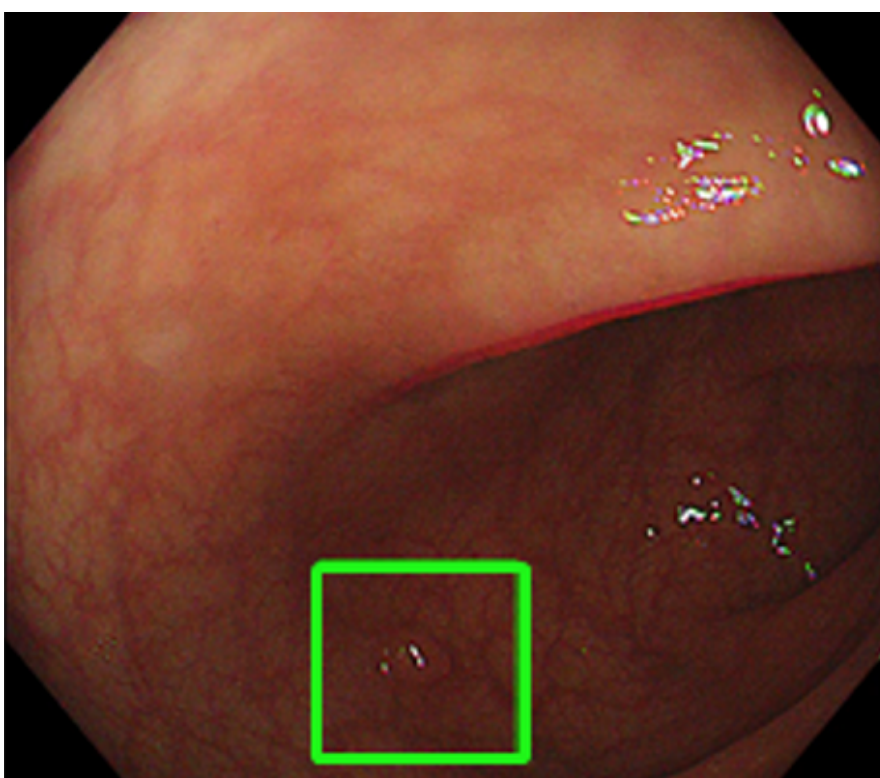
## Real-Time Computer-Aided Detection for Endoscopy

### How ENDO-AID CADe Works

ENDO-AID CADe is an application for computer-aided detection powered by AI that runs on ENDOAID. It uses a complex algorithm from a neural network based on the training data used by specialist doctors to enable automatic detection of suspicious lesions under various conditions. With this new application, the system can alert HCPs in real time when a suspected colonic lesion (such as a polyp, malignant neoplasm or adenoma) appears on the screen.



Lesion at edge of image

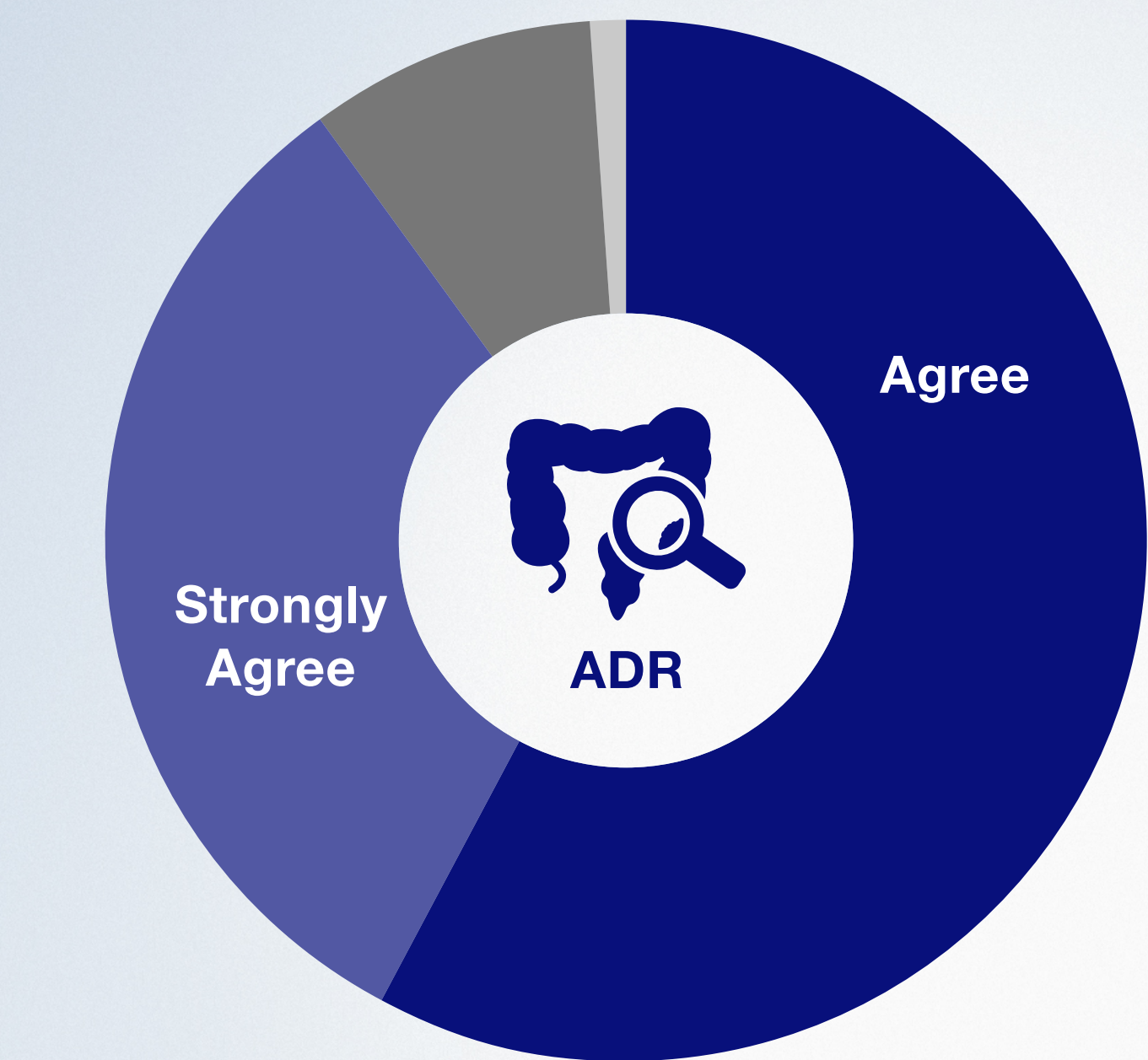


Lesion in background



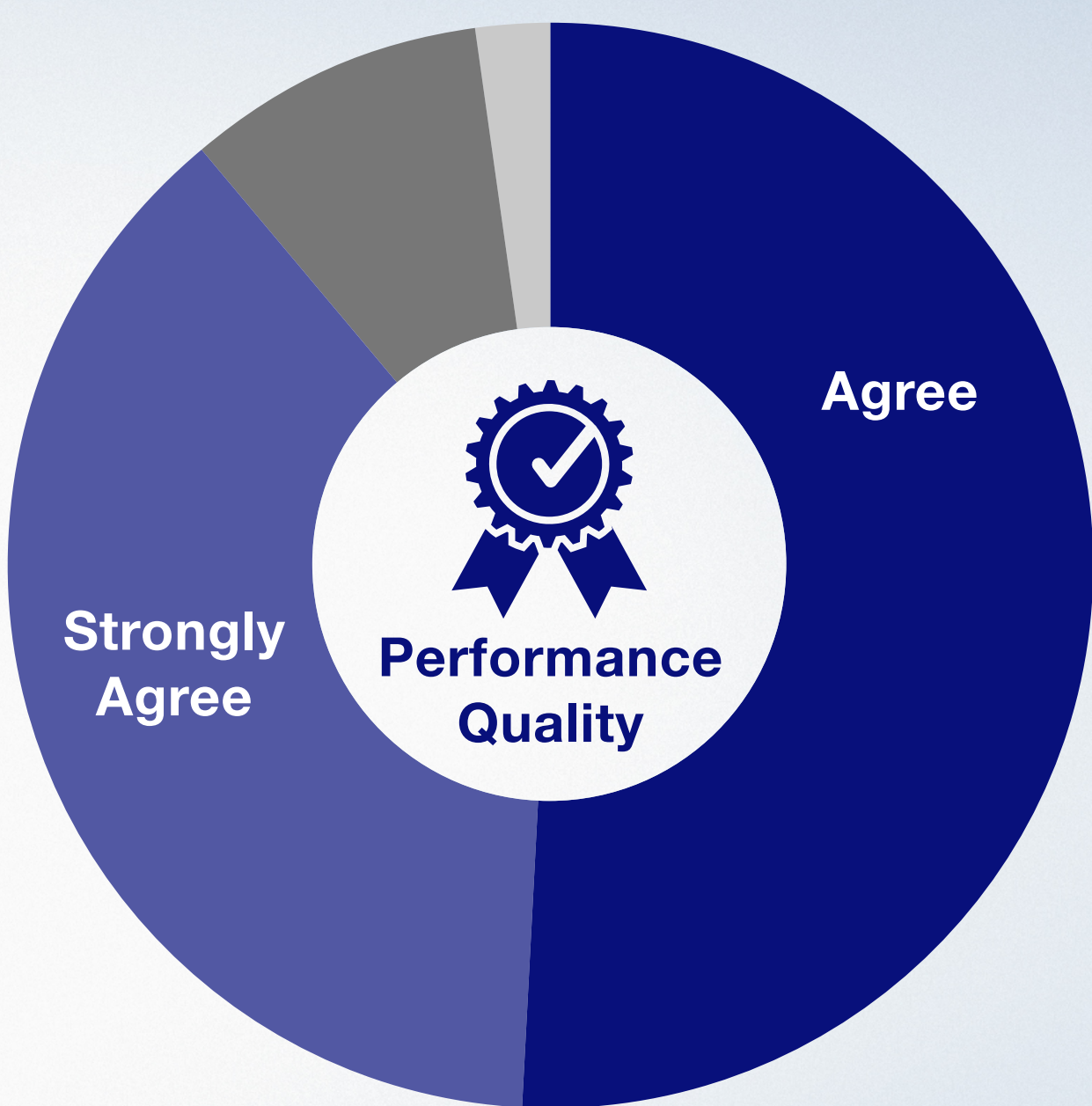
Flat lesion

90% of physicians and colonoscopists agree that ENDO-AID CADe has a positive impact on their ADR\*



Agree	58%
Strongly agree	32%
Disagree	9%
No value	1%

And almost 90% agree that this product will improve clinical performance and quality\*



Agree	51%
Strongly agree	38%
Disagree	9%
No value	2%

\*Data based on survey with 72 physicians and colonoscopists in EMEA-wide OPDs (On-Patient Demonstrations) until April 2022



## References

<sup>1</sup> Wong, YT, Tai, TF, Wong, KF, et al. The study on artificial intelligence (AI) colonoscopy in affecting the rate of polyp detection in colonoscopy: A single centre retrospective study. Surg Pract. 2022; 1- 5. doi:10.1111/1744-1633.12559

<sup>2</sup> Cain, M. and Mittman R. (2002). Diffusion of Innovation in Health Care. California HealthCare Foundation. ihealthreports.

<sup>3</sup> Corley, D.A., Jensen, C.D., Marks, A.R., et al. Adenoma Detection Rate and Risk of Colorectal Cancer and Death. N Engl J Med. 2014; 370: 1298–1306. Available at: <https://www.ncbi.nlm.nih.gov/pmc/articles/PMC4036494/>. Accessed in October 2020

Read More About ...

As medical knowledge is constantly growing, technical modifications or changes of the product design, product specifications and accessories may be required.



**OLYMPUS EUROPA SE & CO. KG**  
Postbox 10 49 08, 20034 Hamburg, Germany  
Wendenstrasse 14-18, 20097 Hamburg, Germany  
Phone: +49 40 23773-0, Fax: +49 40 233765  
[www.olympus-europa.com](http://www.olympus-europa.com)