

PCF-H190DL/I

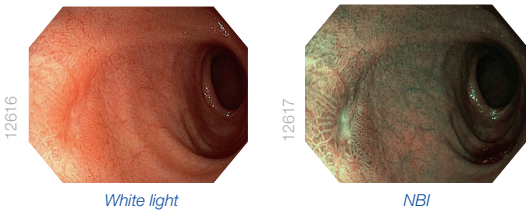
The Slim Colonoscope with ScopeGuide Compatibility.



Main Features

HDTV and NBI (Narrow Band Imaging)

HDTV image quality and 170° angle of view support detailed observation and facilitate lesion detection. This in combination with the high performance of the EVIS EXERA III's NBI opens up exciting new clinical applications and reinforces NBI's position as the standard of care for GI endoscopy.



RIT (Responsive Insertion Technology)

RIT combines three proprietary insertion tube technologies: HFT (High Force Transmission), PB (Passive Bending), and variable stiffness. These technologies are designed to facilitate complete colonoscopies by improving scope handling, insertability, and ergonomics. PB helps EVIS EXERA III 190 Series scopes move through acute bends in the colon. HFT provides improved operator control for pushing, pulling, and twisting maneuvers. Variable stiffness allows the physician to adjust the rigidity of OLYMPUS scopes as needed by simply turning an adjustment ring on the scope-control section.

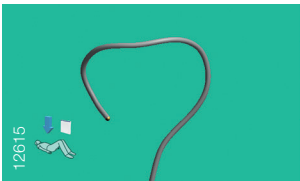
Water Jet

The water jet function is standard on EVIS EXERA III colonoscopes for routine procedures. This technology helps to keep the mucosa clear during observation and treatment.



Slim Colonoscope with ScopeGuide Function

While maintaining a slim outer diameter, the PCF-H190DL/I scope's added ScopeGuide technology provides real-time 3D visualization of the scope's position and configuration during insertion. It supports physicians by making it possible to recognize loops as they form, potentially leading to shorter insertion times and less patient discomfort.



Waterproof One-touch Connector

The connector design minimizes the effort required for setup prior to and between cases. In addition, it is fully submersible and eliminates the need for a water-resistant cap and the associated risk of an expensive repair due to accidental immersion.



Specifications

Optical System	Field of view	170°
	Direction of view	Forward viewing
	Depth of field	2–100 mm
Insertion Section	Distal end outer diameter	11.7 mm
	Distal end enlarged	
Instrument Channel	Insertion tube outer diameter	11.8 mm
	Working length	L: 1680 mm, I: 1330 mm
	Channel inner diameter	3.2 mm
	Minimum visible distance	3.0 mm from the distal end
	Direction from which endotherapy accessories enter and exit the endoscopic image	
Water Jet		



Bending Section	Angulation range	Up 180°
		Down 180°
		Right 160°
		Left 160°
Total Length	L: 2005 mm I: 1655 mm	
Compatible	Video System Center OLYMPUS CV-190	
EVIS EXERA System	Xenon Light Source OLYMPUS CLV-190	
Position-Detecting Unit	Compatible with UPD-3 (Endoscope Position-Detecting Unit)	

Specifications, design, and accessories are subject to change without any notice or obligation on the part of the manufacturer.