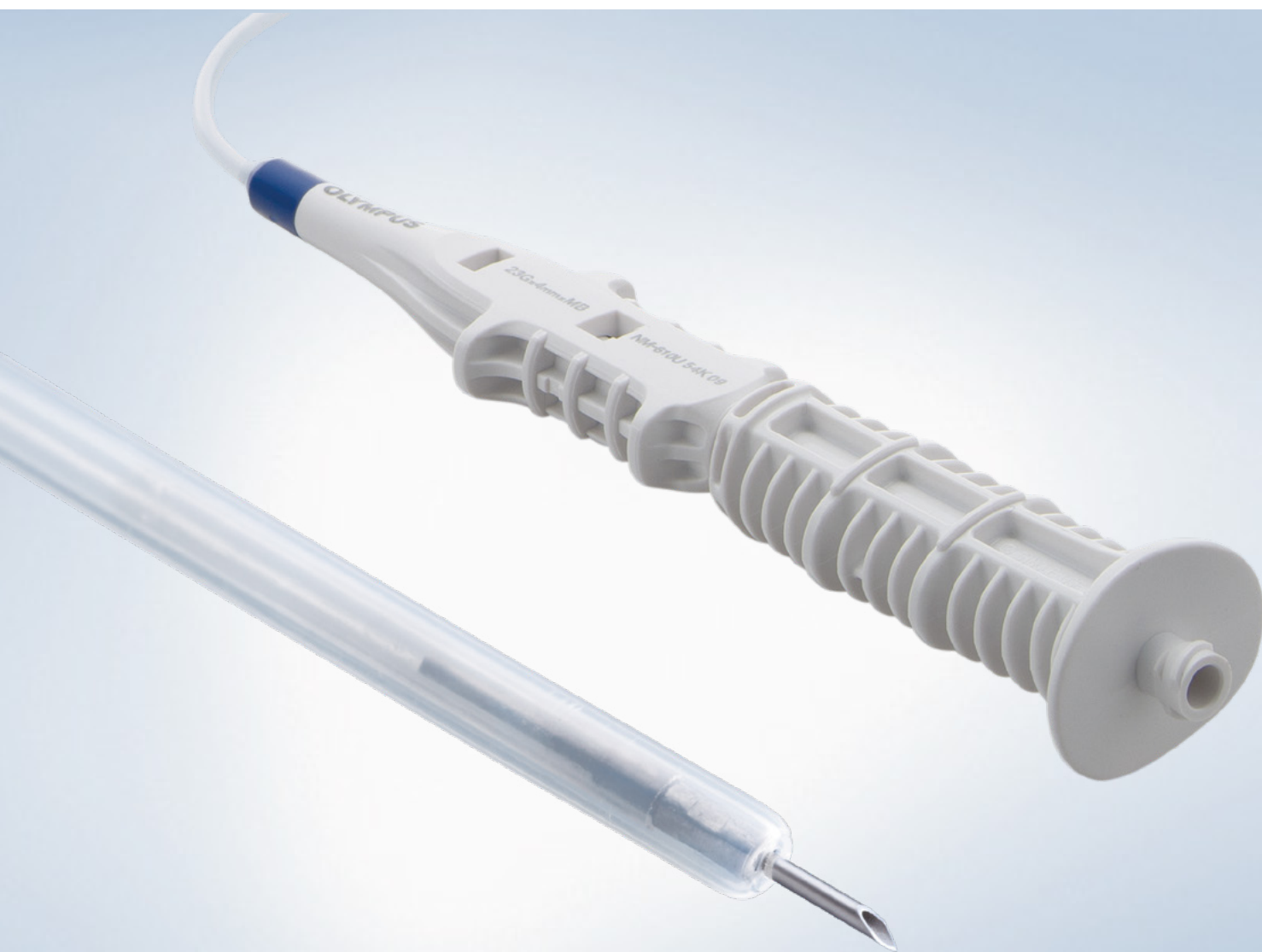


NeedleMaster

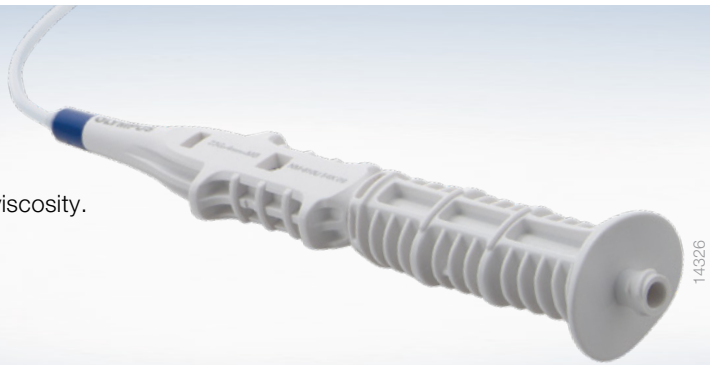
Single-Use Injection Needle



Mastering Endoscopic Injection

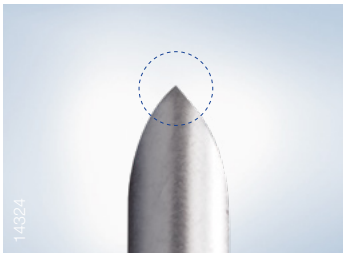
What Are You Looking for in an Endoscopic Injection Needle?

- Easy puncture with less resistance.
- Large flow rate and smooth injection – even of liquids with high viscosity.
- Single-handed operation.
- Longer maintenance of lifting via injection during ESD.



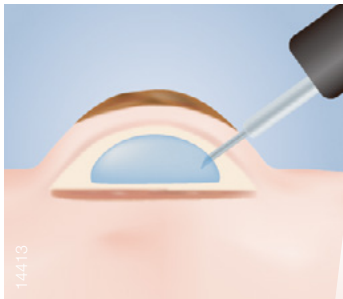
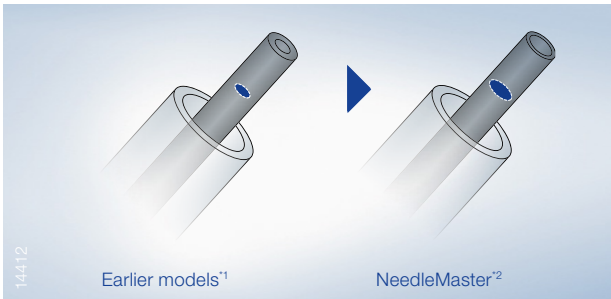
Excellent Puncture Performance

Now featuring a 3-bevel tip, the NeedleMaster is manufactured using new processing technology that has made it possible to sharpen the needle right to the very end. As a result, you'll experience much less resistance during puncturing than with its predecessors.



Improved Injectability

While the outer diameter of the needle remains the same as on earlier models¹, the lumen has been expanded. This allows even high-viscosity liquid to pass through smoothly.



You Will Find the Answer in the NeedleMaster

- Superior puncture performance with the new 3-bevel tip.
- Improved injectability of high-viscosity liquid due to increased inner lumen.
- Ergonomic handle design with a non-slip surface to enable safe single-handed operation.
- Slimmer 26G model to reduce leakage of injection solution during ESD.



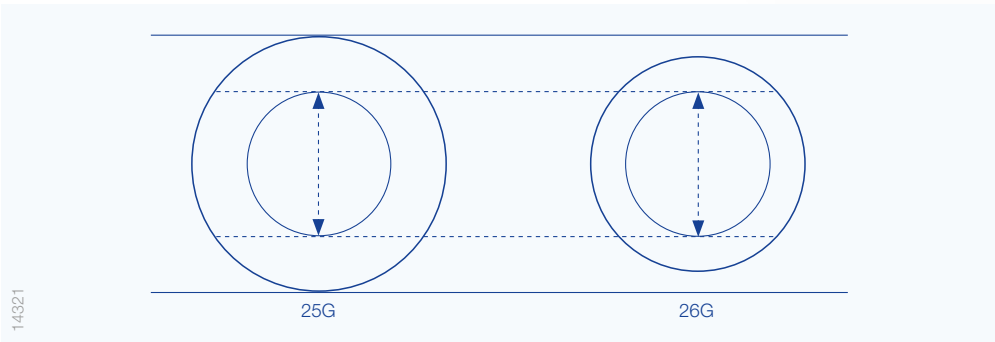
User-Friendly Handle Design

For a better, more secure grip, the handle has been redesigned and now features a roughly textured non-slip surface. The improved grip also facilitates single-handed operation, while helping reduce the force needed to inject high-viscosity liquid.



Slimmer Version Now Available

A thinner 26G model version with a lumen size equivalent to 25G models is now available. As the smaller diameter needle makes a smaller puncture hole, leakage of injected solution is reduced. This could be expected to slow down loss of height in the lifted area during ESD.



¹ Model name example — NM-200U-0425, ² Model name example — NM-610U-0425

Specifications

Single-Use Injection Needle

Article Name	Article Number	Quantity	Min. Working Channel Ø	Working Length	Needle Bevel	Needle Length (A)	Needle Ø (B)
NM-610L-0421	N6142150	5/box	2.8 mm	1650 mm	Middle	4.0 mm	21G = 0.8 mm
NM-600L-0421	N6140950	5/box	2.8 mm	1650 mm	Regular	4.0 mm	21G = 0.8 mm
NM-600L-0621	N6141550	5/box	2.8 mm	1650 mm	Regular	6.0 mm	21G = 0.8 mm
NM-610L-0423	N6142250	5/box	2.8 mm	1650 mm	Middle	4.0 mm	23G = 0.6 mm
NM-600L-0423	N6141050	5/box	2.8 mm	1650 mm	Regular	4.0 mm	23G = 0.6 mm
NM-600L-0523	N6141350	5/box	2.8 mm	1650 mm	Regular	5.0 mm	23G = 0.6 mm
NM-600L-0623	N6141650	5/box	2.8mm	1650 mm	Regular	6.0 mm	21G = 0.8 mm
NM-610L-0525	N6143150	5/box	2.8 mm	1650 mm	Middle	5.0 mm	25G = 0.5 mm
NM-600L-0525	N6141450	5/box	2.8 mm	1650 mm	Regular	5.0 mm	25G = 0.5 mm
NM-610L-0426	N6142650	5/box	2.8 mm	1650 mm	Middle	4.0 mm	26G = 0.4 mm
NM-610U-0323	N6141850	5/box	2.8 mm	2300 mm	Middle	3.0 mm	23G = 0.6 mm
NM-610U-0423	N6142350	5/box	2.8 mm	2300 mm	Middle	4.0 mm	23G = 0.6 mm
NM-610U-0523	N6143050	5/box	2.8 mm	2300 mm	Middle	5.0 mm	23G = 0.6 mm
NM-610U-0623	N6143550	5/box	2.8 mm	2300 mm	Middle	6.0 mm	23G = 0.6 mm
NM-610U-1825	N6143850	5/box	2.8 mm	2300 mm	Middle	1.8 mm	25G = 0.5 mm
NM-610U-0425	N6142550	5/box	2.8 mm	2300 mm	Middle	4.0 mm	25G = 0.5 mm
NM-610U-0525	N6143250	5/box	2.8 mm	2300 mm	Middle	5.0 mm	25G = 0.5 mm
NM-610U-0625	N6143750	5/box	2.8 mm	2300 mm	Middle	6.0 mm	25G = 0.5 mm
NM-610U-1826	N6143950	5/box	2.8 mm	2300 mm	Middle	1.8 mm	26G = 0.4 mm
NM-610U-0426	N6142750	5/box	2.8 mm	2300 mm	Middle	4.0 mm	26G = 0.4 mm



MB: Middle bevel



RB: Regular bevel



NeedleMaster

As medical knowledge is constantly growing, technical modifications or changes of the product design, product specifications, accessories and service offerings may be required