

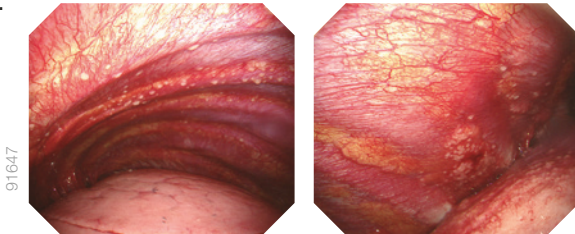
Pleura Videoscope  
**LTF-H290**

**Bright and Clear HD Imaging Contributes to More Reliable Pleuroscopy**



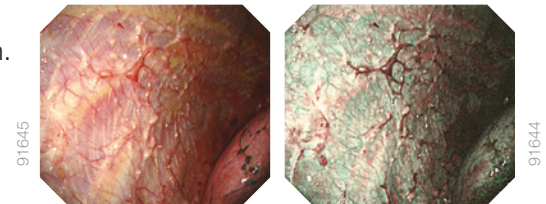
## Bright, Clear Observation with HD Imaging

With high quality sensor, the LTF-H290 delivers clearer, brighter images, contributing to more reliable observation, diagnosis and treatment in the thoracic cavity.



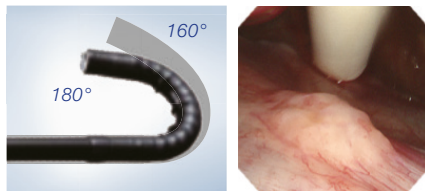
## NBI Compatibility

When combined with the Olympus video system, the LTF-H290 offers NBI (Narrow Band Imaging) observation, providing enhanced imaging of the surface of pleura and vascular structures for more accurate observation.



## Wide Angulation Range

A 180° UP angulation range gives you control over the scope inside the thoracic cavity and makes it possible to observe lesions close to the trocar.



\*1 Comparing to the conventional scopes (160°)

- EVIS PLEURA VIDEOSCOPE OLYMPUS LTF TYPE 240
- EVIS LUCERA PLEURA VIDEOSCOPE OLYMPUS LTF TYPE 260
- EVIS EXERA PLEURA VIDEOSCOPE OLYMPUS LTF TYPE 160

## Large 3.0 mm-Diameter Channel

The LTF-H290 is equipped with a large 3.0 mm diameter working channel, that provides stronger suction power compared to the 2.8 mm diameter working channel of the predecessors<sup>1</sup> and that helps maintain a clearer view during the suction of pleural fluid or blood after biopsy.



## EndoJaw Single Use Biopsy Forceps FB-420K

The LTF-H290 is compatible with EndoJaw FB-420K, a 2.8 mm diameter working channel compatible single-use biopsy forceps with swing jaw mechanism that facilitates tangential approaches by capturing the tissue from the top of the biopsy site. It also has a double-step blade that makes the edges of the cup thin and sharp.



## Specifications

Pleura Videoscope LTF-H290		Single Use Biopsy Forceps FB-420K			
<b>Optical System</b>	Field of view	120°			
	Direction of view	Forward viewing			
	Depth of field	7 - 100 mm			
<b>Insertion Section</b>	Distal end outer diameter	ø 7.3 mm	<b>Maximum Diameter (mm)</b>	ø 2.45	
	Distal end enlarged	Instrument channel outlet	<b>Working Length (mm)</b>	1517	
		<b>Fenestrated Cups</b>	Yes		
Rigid section outer diameter ø 7.0 mm Insertion section working length 270 mm		<b>Covered Coil Sheath</b>	Yes		
<b>Instrument Channel</b>	Channel inner diameter	3.0 mm	<b>Compatible Olympus Endoscopes</b>	Length and model	Working length 270 mm or less; LTF
	Minimum visible distance*2	3 mm	(All of these parameters should be met.)	Channel inner diameter (mm) (color code)	ø 2.8, ø 3.0 (yellow)
	Direction from which EndoTherapy accessories enter and exit the endoscopic image				
<b>Bending Section</b>	Angulation range	Up 180° / Down 130°			
<b>Total Length</b>		540 mm			
<b>Compatible Trocar</b>		Flexible trocar 8 mm MAJ-1058	EVIS LUCERA ELITE PLEURA Videoscope Olympus LTF-H290 Single Use Biopsy Forceps FB-420K		
<b>Compatible System</b>		EVIS X1 video system center Olympus CV-1500,			
		EVIS LUCERA ELITE video system center Olympus CV-290,			
		EVIS LUCERA ELITE xenon light source Olympus CLV-290, CLV-290SL			

\*1,2 Distance from the distal end of the endoscope.

As medical knowledge is constantly growing, technical modifications or changes of the product design, product specifications, accessories and service offerings may be required.