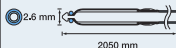

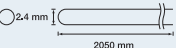
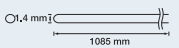




■ Endoscopic Ultrasonic Probe Specifications

	UM-BS20-26R	UM-S30-20R	UM-S30-25R	UM-S20-17S	UM-S20-20R	UM-2R/3R
Display mode	B-Mode					
Scanning method	Mechanical radial scanning					
Scanning direction	360° circumferential, in perpendicular direction with respect to probe insertion direction					
Ultrasonic frequency	20MHz	30MHz		20MHz		12MHz (2R), 20MHz (3R)
Working length	2050 mm			2150 mm	2050 mm	
Total length	2140 mm			2225 mm	2140 mm	
Insertion tube	2.5 mm	1.7 mm (distal end 850mm) 2.0 mm (on connector side)	2.4 mm	1.4 mm (distal end 1085mm) 1.7 mm (on connector side)	1.7 mm (distal end 850mm) 2.0 mm (on connector side)	2.4 mm
maximum diameter	2.6 mm	2.0 mm	2.5 mm	1.8 mm	2.0 mm	2.5 mm
Compatible scope	2.8 mm or more	2.2 mm or more	2.8 mm or more	2.0 mm or more	2.2 mm or more	2.8 mm or more
Contact method for ROI	Balloon Contact Method		Direct Contact Method			
Distal-end illustration						
Guide-sheath compatibility	×	○	×	○	○	×

■ Guide Sheath Kit Specifications

Model name	K-201	K-202	K-203	K-204
Compatible channel diameter	2.0 mm		2.6 mm	
Set content	Guide Sheath	SG-200C	SG-200C	SG-201C
	Biopsy Forceps	FB-233D	FB-233D	FB-231D
	Cytology Brush	BC-204D-2010	-	BC-202D-2010
ET Stopper	3 pcs. (white)		3 pcs. (2 pcs: gray / 1 pc: white)	
US Stopper	1 pc. (white)		1 pc. (gray)	

■ Guide Sheath Kit (K-201/K-203)



Complete set of guide sheath combinations with biopsy forceps and cytology brush. Available in two types — large diameter (2.6 mm) and small diameter (2.0 mm).

K-201: 2.0 mm K-203: 2.6 mm • ET Stopper 3 pcs.
• Guide Sheath (single-use) • US Stopper 1 pc.
• Biopsy Forceps (single-use)

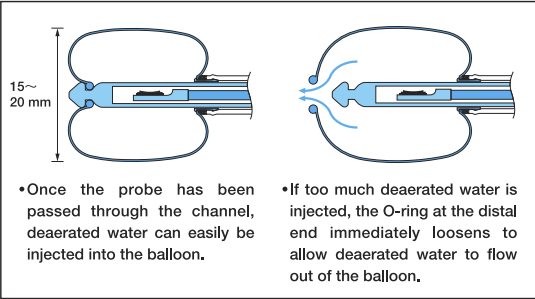
■ Guide Sheath Kit (K-202/K-204)



Guide sheath and biopsy forceps. Available in two types — large diameter (2.6 mm) and small diameter (2.0 mm).

K-202: 2.0 mm K-204: 2.6 mm • ET Stopper 3 pcs.
• Guide Sheath (single-use) • US Stopper 1 pc.
• Biopsy Forceps (single-use)

■ Mechanism of the UM-BS20-26R distal end



OLYMPUS®

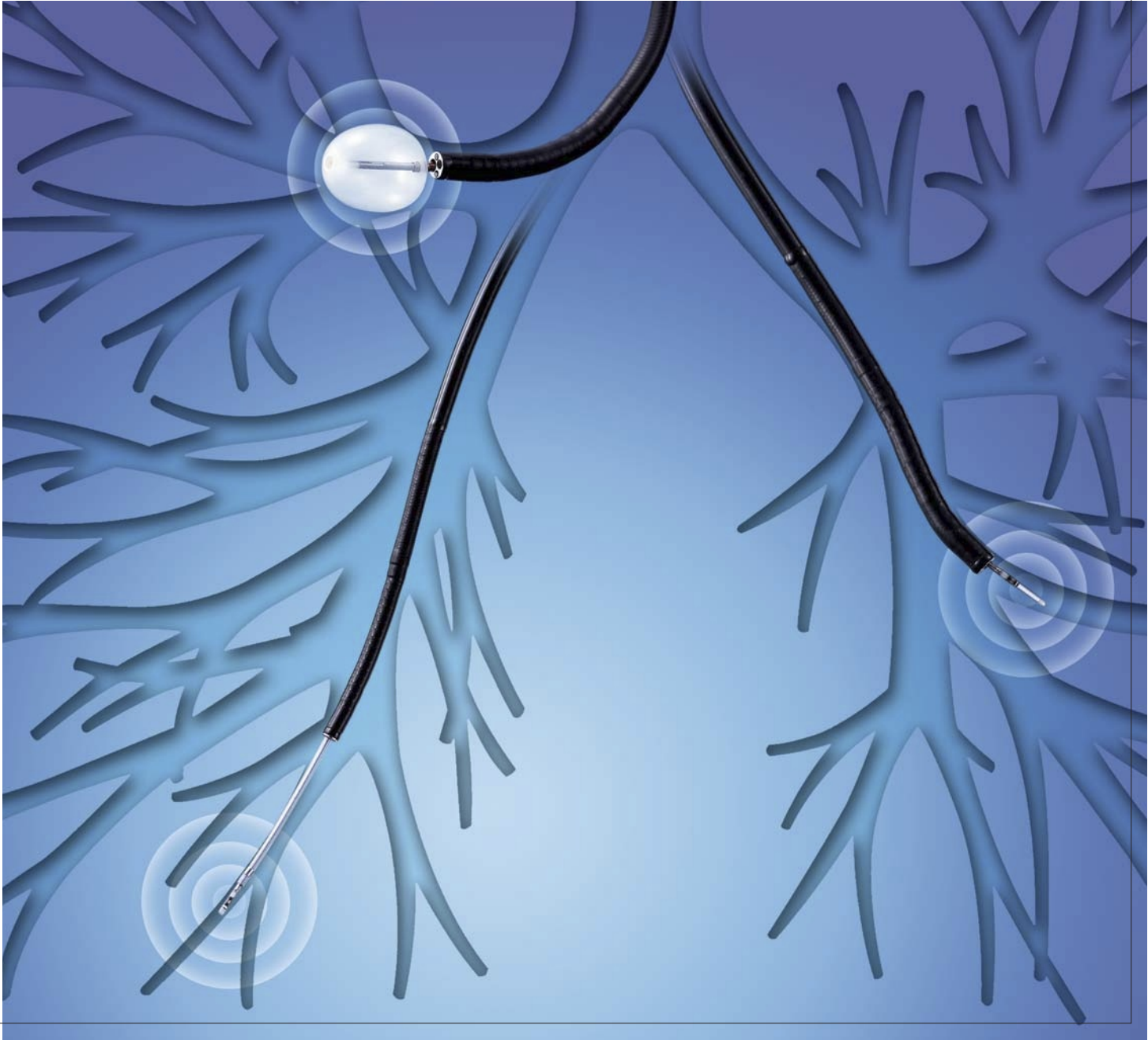
Your Vision, Our Future

EUS
ENDOSCOPIC ULTRASOUND SYSTEM

Endoscopic Ultrasonic Probes

UM-BS20-26R
UM-S30-20R/UM-S30-25R
UM-S20-17S/UM-S20-20R
UM-2R/UM-3R

A Wide Range of Ultrasonic Probes Enhances EBUS Versatility



Specifications, design and accessories are subject to change without any notice or obligation on the part of the manufacturer.

OLYMPUS®

www.olympus.com

OLYMPUS MEDICAL SYSTEMS CORP.
Shinjuku Monolith, 5-1 Nishi-Shinjuku 2-chome, Shinjuku-ku, Tokyo 163-0914, Japan
OLYMPUS MEDICAL SYSTEMS EUROPA GMBH
Postfach 10 49 08, 20034 Hamburg / Wendenstrasse 14-18, 20097 Hamburg, Germany
OLYMPUS AMERICA INC.
3500 Corporate Parkway, 2nd Box 610, Center Valley, PA19034-0610, U.S.A.
OLYMPUS SURGICAL & INDUSTRIAL AMERICA INC.
One Corporate Drive, Orangeburg, New York 10962, U.S.A.
OLYMPUS LATIN AMERICA, INC.
5301 Blue Lagoon Drive, Suite 290 Miami, Florida 33126-2097, U.S.A.
KEYMED LTD.
Keymed House, Stock Road, Southend-on-Sea, Essex SS2 5QH, England

OLYMPUS SINGAPORE PTE LTD.
491B River Valley Road #12-01/04 Valley Point Office Tower Singapore 248373
OLYMPUS HONG KONG AND CHINA LIMITED
Room 1520-1527, Ocean Centre, 5 Canton Road, Tsimshatsui, Kowloon, Hong Kong
OLYMPUS (BEIJING) SALES & SERVICE CO. LTD.
Room 1202, NCI Tower, A19 Jianguomenwai Avenue Chaoyang District Beijing, 100022, China
OLYMPUS MOSCOW LIMITED LIABILITY COMPANY
117071, Moscow, Malaya Kaluzhskaya 19, bld. 1, fl.2, Russia
OLYMPUS AUSTRALIA PTY LTD
31 Gilby Road, Mount Waverley, VIC, 3149, Australia

Compatible with channel diameters of 2.0 mm, 2.2 mm, and 2.8 mm, this comprehensive selection of ultrasonic probes from Olympus allows endobronchial ultrasonography of the target lesion in various regions of the bronchi, using either balloon contact method or direct contact method.

Central Region (Balloon Contact Method)

UM-BS20-26R+MAJ-643R (2.8 mm or greater channel diameter)

Peripheral Region (Direct Contact Method)

UM-S30-25R (2.8 mm or greater channel diameter)

UM-2R/3R (2.8 mm or greater channel diameter)

UM-S30-20R (2.2 mm or greater channel diameter)

UM-S20-20R (2.2 mm or greater channel diameter)

UM-S20-17S (2.0 mm or greater channel diameter)

Guide sheath compatible

Guide sheath compatible

Guide sheath compatible

Central Region

UM-BS20-26R

Peripheral Region

UM-S20-20R

UM-S20-17S+Guide sheath

Balloon Contact Method **UM-BS20-26R**



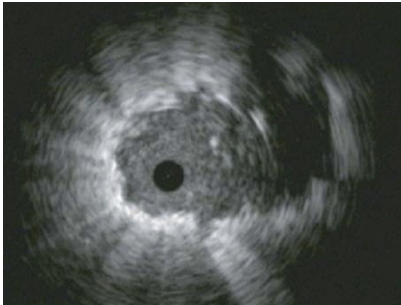
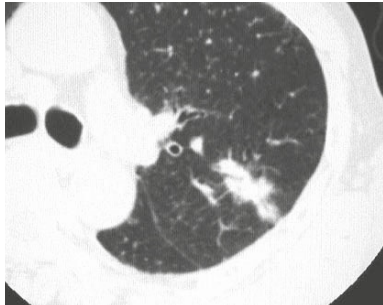
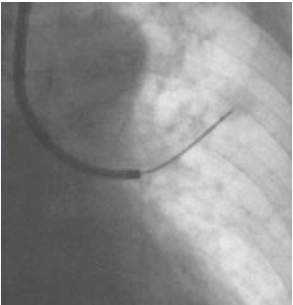
UM-BS20-26R Main Features

- Compatible with bronchoscopes with a channel diameter of 2.8 mm or greater.
- The Balloon Contact Method can be used when this probe is combined with the MAJ-643R dedicated balloon sheath. Once this combination has been passed through the scope channel, the balloon can be inflated at the tip of the probe.
- All you have to do to perform ultrasonography is connect the probe to a radial type endoscopic ultrasound center.

Caution: The Balloon contains natural rubber latex which may cause allergic reactions.
Note: The optional three-way stopcock, syringe, and extension tube are required when the balloon sheath is used.



Direct Contact Method **UM-S20-17S** **Guide sheath compatible**



UM-S20-17S Main Features

- With an insertion tube that measures just 1.4 mm in diameter, this probe is compatible with a guide sheath with a 2.0 mm channel diameter.
- 20 MHz frequency generates high resolution images to support diagnosis and observation.
- This probe uses the S length, making it longer than standard probes and enhancing maneuverability when approaching the target site.



[Guide Sheath Method]

This new technique is expected to improve the reliability and accuracy of bronchoscopic approaches to peripheral lung lesions, enhancing diagnostic results and improving efficiency.

GuideSheathKit