

OLYMPUS

Your Vision, Our Future

Endo) **Therapy**

Single-Use Electrosurgical Knife

TRIANGLETIPKNIFE J

New Design with Water Jet Appropriate for POEM



BETTER POEM SUPPORT WITH TRIANGLETIPKNIFE J

Featuring a Jet Function and Improved Distal Design to Better Support ESD and POEM Procedures

Specifically designed for more complex ESD techniques and advanced POEM procedures, the new TriangleTipKnife J features a thinner, more compact tip and a new jet function.



Submucosal Injection

Addition of a new jet function lets you perform saline injection after cutting – without switching devices.

Versatile Design

This is the only tool you need for every step in a POEM or ESD procedure – from marking to incision, additional injection, dissection, and hemostasis.

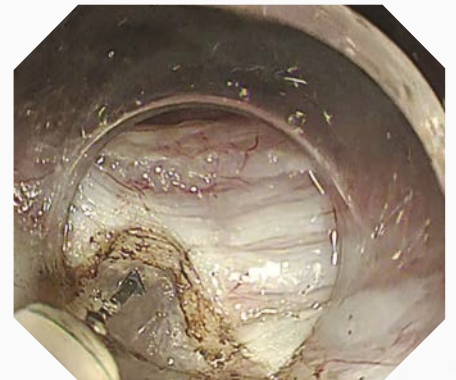
POEM Application Examples



Additional injection to submucosa



Submucosal dissection



Myotomy

Unique Triangular Tip Design

Thinner and more compact triangular tip design helps you to perform accurate and efficient cutting and coagulation by using high-voltage modes such as spray coagulation.

	TriangleTipKnife J KD-645L	TriangleTipKnife KD-640L
Max. insertion portion diameter	Ø 2.6 mm	Ø 2.6 mm
Cutting knife length	4.5 mm	4.5 mm
Cutting knife diameter	0.4 mm	0.4 mm
Triangular tip length	0.4 mm	0.7 mm
Triangular tip thickness	0.3 mm	0.4 mm



TriangleTipKnife J

TriangleTipKnife



Distal End Cover
Round shape supports smooth manipulation even from a tangential direction.

Spray Coag Compatibility

This is the first ESD and POEM device compatible with the high-voltage Spray Coag mode, supporting effective dissection.

TRIANGLETIPKNIFE J KD-645L



Specifications

Article Name	Article Number	Quantity	Description	Min. Working Channel Ø	Working Length	Cutting Knife Length
KD-645L	N5412530	1	TriangleTipKnife J	2.8 mm	1650 mm	4.5 mm

Related Products and Accessories

TriangleTipKnife J can be used together with the Olympus Flushing Pump OFP-2 in connection with the following sterile, single-patient tubes:



OFP-2 Pump



MAJ-1681



MAJ-1682

Specifications

Article Name	Article Number	Quantity	Description
MAJ-1681	K10026641	10	Accessory port tube with bottle cap
MAJ-1682	K10026686	10	Accessory port tube with spike
OFP-2	K10001143	1	Endoscopic flushing pump

Specifications, design, and accessories are subject to change without any notice or obligation on the part of the manufacturer.

OLYMPUS

OLYMPUS EUROPA SE & CO. KG
 Postbox 10 49 08, 20034 Hamburg, Germany
 Wendenstrasse 14-18, 20097 Hamburg, Germany
 Phone: +49 40 23773-0, Fax: +49 40 233765
 www.olympus-europa.com

