



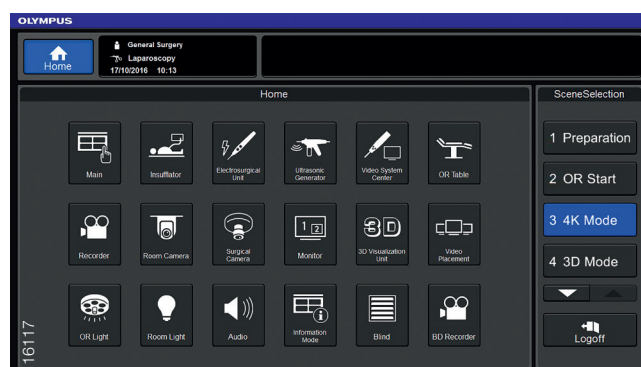
## UCES-4

Simplify Your OR Workflow with Integrated Control

UCES-4 is a medical Class II device that optimizes your workflow and increases efficiency. UCES-4 can increase the usability of the latest image technology such as 4K and 3D and offers video-over-IP routing within the OR. Clinical staff don't need to worry about video signal compatibility. Additionally, UCES-4 has a centralized one-touch control function that is not limited to medical devices; it can also control peripheral units and facilities in the OR. This makes it possible to simplify your OR workflow with integrated control. Intuitive operation enables clinical staff to easily select the desired function and navigate using touch or voice control. Olympus takes automated preselected settings to a new level with **SceneSelection**. In addition to controlling the initial settings of medical devices, UCES-4 can utilize settings for pre-, intra-, and post-operative procedures. This can help to standardize procedures, decrease turnaround time, and improve workflow.

### Main Features

- Easy handling for the latest image chain (4K, 3D) and video-over-IP routing
- Procedure support function (**SceneSelection**) to facilitate control over a wider range of units in the OR
- Rapidly save and recall medical-tower settings with a single touch
- Supports automatic smoke evacuation
- Intuitive and procedure-oriented user interface
- Video Preview function makes it possible to modify ancillary device settings while observing the control target image
- Combines medical control and video management in one device
- UCES-4 is compatible with the ES4K procedure space integration platform and other platforms



UCES-4 user interface

### Specifications

UCES-4 Medical Control Unit for Endosurgery			MAJ-2191 Extension Unit for UCES-4		
Power Supply	Voltage	100–200 V	100–240 V		
	Voltage fluctuation	Within $\pm 10\%$	Within $\pm 10\%$		
	Frequency	50/60 Hz	50/60 Hz		
	Frequency fluctuation	Within $\pm 3\%$	Within $\pm 3\%$		
	Input current	100 VA	60 VA		
Size	Dimensions	370 (W) $\times$ 115 (H) $\times$ 433 (D) mm	370 (W) $\times$ 73 (H) $\times$ 313 (D) mm		
	Dimensions (maximum)	375 (W) $\times$ 120 (H) $\times$ 451 (D) mm	375 (W) $\times$ 79 (H) $\times$ 331 (D) mm		
	Weight	7.1 kg	3.8 kg		

As medical knowledge is constantly growing, technical modifications or changes of the product design, product specifications, accessories and service offerings may be required.