

# Single Use Electrosurgical Knife KD-612

**OLYMPUS**<sup>®</sup>

Your Vision, Our Future

Endo**Therapy**<sup>™</sup>

## Specifications

Model	KD-612L	KD-612U
Channel diameter	2.8 mm or more	
Working length	1650 mm	2300 mm
Tip diameter	1.7 mm	
Electrode diameter	0.9 mm	
Cutting knife length	3.5 mm	
Sterile, single-use	○	
Built-in handle	○	



Single Use Electrosurgical Knife KD-612

**ITknife nano**<sup>™</sup>



## Cautions on use of the knives and supporting devices for ESD

### Warning

Before use, thoroughly review the manual and use the instruments as instructed.

These instruments have been designed for use by physicians or medical personnel under the supervision of a physician.

In certain cases the use of these instruments could lead to perforation or haemorrhages and may require surgical intervention as an emergency measure.

Only use this product if you have received appropriate training in order to develop an understanding of the clinical application and the proper use of this product.

For information on training and other material, please contact OLYMPUS.



See instruction manual for further information.

Specifications, design and accessories are subject to change without any notice or obligation on the part of the manufacturer.

**OLYMPUS**<sup>®</sup>

OLYMPUS MEDICAL SYSTEMS CORP.  
Shinjuku Monolith, 2-3-1 Nishi-Shinjuku, Shinjuku-ku, Tokyo 163-0914, Japan

For a complete listing of  
sales and distribution locations visit:  
[www.olympus.com](http://www.olympus.com)

Printed in Japan F0375E4-082012

# Advancing the Evolution of ITknife

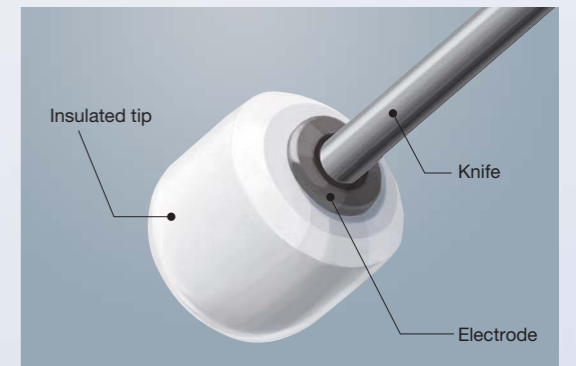
ITknife nano™

ITknife nano™ — Another way OLYMPUS are supporting more efficient Endoscopic Submucosal Dissection (ESD). ITknife nano™ facilitates more effective application of ESD in areas where the submucosal layer is thin and working area is limited, such as in the oesophagus and the colon. Since it also features the insulated tip design made popular by the previous model ITknife2™\*, safety and reliability are assured during ESD. With its advanced new design, ITknife nano™ is today's knife of choice for ESD procedures.

\*Single Use Electrosurgical Knife, KD-611L

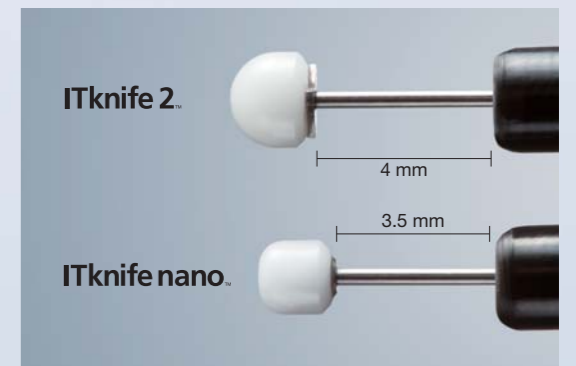
## Disc-shaped electrode

- A small, disc-shaped electrode on the bottom of the insulated tip is optimised for organs with a thin submucosal layer.
- This design supports accurate control of the cutting area.



## Optimised knife length

At just 3.5 mm, the knife length is shorter than on previous models, which allows for improved manoeuvrability in constricted areas, such as the oesophagus and the colon.

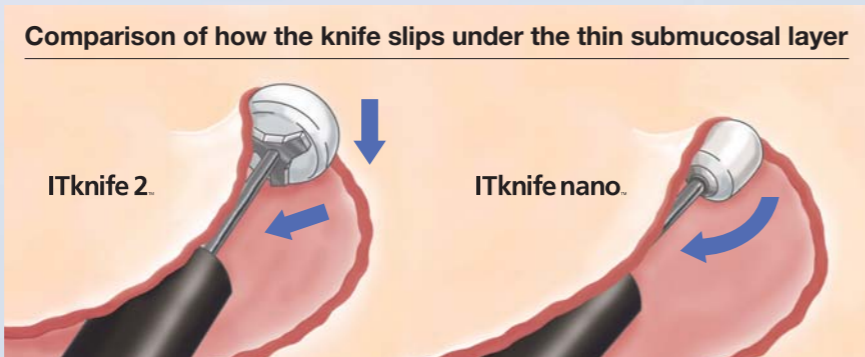


## Smaller insulated tip

- Improves the manoeuvrability of the knife in organs with a thin submucosal layer.
- Makes it easier to slide the knife under the thin submucosal layer for more reliable dissection.

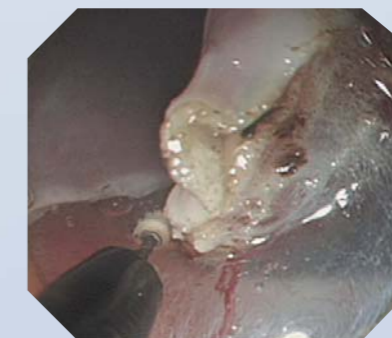


ITknife 2. ITknife nano.

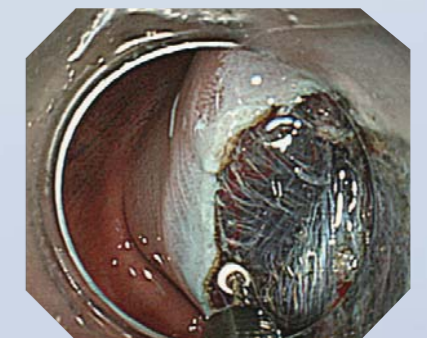


Due to the smaller insulation tip design of ITknife nano™, it can slide more easily under the submucosal layer.

## Clinical applications of ITknife nano™



Oesophagus



Colon

Note: This device cannot be used in areas which have a thick mucosal layer such as the stomach.