

OLYMPUS[®]

Your Vision, Our Future

**EVIS LUCERA
ELITE**

EVIS LUCERA ELITE GASTROINTESTINAL VIDEOSCOPE

GIF-XP290N

Ultra-slim design with electrosurgery compatibility and outstanding image quality



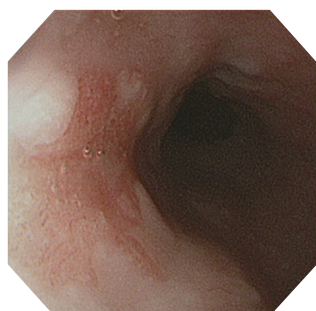
Main Features

Ultra-slim Design

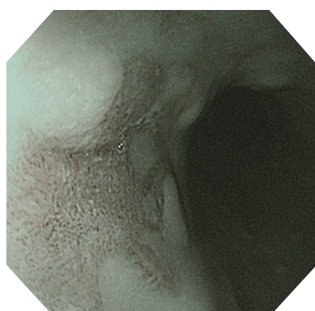
The 5.4 mm outer diameter of the distal end eases insertion. The shape of the scope tip is carefully formed for smooth removal, which further reduces patient discomfort.

Advanced Image Clarity

This scope delivers superior image quality, compared to conventional models. Its two light guides help to achieve ample brightness for precise diagnosis. The two guides also reduce shadows during the use of endotherapy devices.



White Light



NBI

Advanced Suction Capability

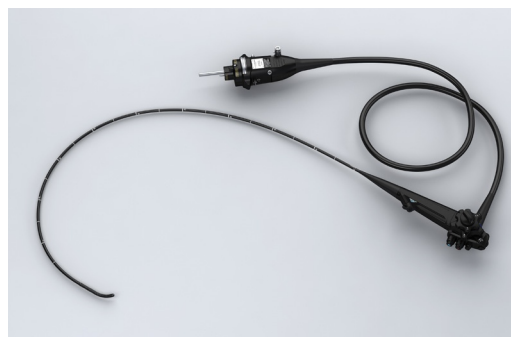
The increase in channel size to 2.2 mm increases suction volume compared to conventional scopes with a 2.0 mm channel.

Wide Viewing Angle

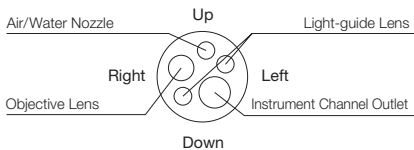
The viewing angle of this ultra-slim scope has been increased to 140 degrees, matching the wide field of vision of larger gastroscopes even in restricted spaces.

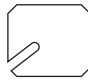
Waterproof One-touch Connector

A new connector design minimizes the effort required for setup prior to and in between cases. In addition, it is fully submersible and eliminates the need for a water-resistant cap and the associated risk of an expensive repair due to accidental immersion.



Specifications

Optical System	Field of view	140°
	Direction of view	Forward viewing
	Depth of field	3-100 mm
Insertion Section	Distal end outer diameter	5.4 mm
	Distal end enlarged	
		
	Insertion tube outer diameter	5.8 mm
	Working length	1100 mm

Instrument Channel	Channel inner diameter	2.2 mm
	Minimum visible distance	2.0 mm from the distal end
Bending Section	Angulation range	Direction from which endotherapy accessories enter and exit the endoscopic image 
		Up 210°
		Down 90°
		Right 100°
Total Length	1420 mm	
	Compatible EVIS LUCERA System	Video System Center OLYMPUS CV-290 Xenon Light Source OLYMPUS CLV-290SL, CLV-290

Specifications, design and accessories are subject to change without any notice or obligation on the part of the manufacturer.